

Din Rail Terminal Blocks

General Information:

Our DIN Rail Terminal Blocks are ideal for various applications such as machine tool controls, distribution and instrumentation installations, switchgear, elevator and panelboard construction.

Insulating Materials:

The moldings are made of Polyamide 6.6. This material has high creepage resistance and high impact strength. It also has a UL 94V-2 flammability rating and is resistant to gasoline, oil, alcohol and many other chemicals.

Temperature Rating: 100°C / 212°F Continuous
170°C / 338°F Intermittent & Short Exposure

Connector System:

The connectors are of copper alloy and are nickel-plated for corrosion resistance. The screws are rolled steel, zinc plated and chromated. The total connector system provides the following benefits:

1. The system ensures that no matter how small the cross section of the wire it can only be inserted into the connection hole.
2. A serrated pressure plate eliminates any wire damage from the torquing of the screw.
3. The upward pressure on the screw from the pressure plate reduces the risk of a screw loosening due to vibration.
4. The pressure plate also compensates for some reduction in contact pressure caused by cold flow in the wire.
5. The design of the pressure plate and its heavy construction eliminates tilting, even with solid wires.
6. The use of rolled rather than turned screw threads provide for the application of higher torque without thread damage.

Reference Chart:

Catalog Number	Page	Amps	Volts	Wire Range	Thickness	Terminals per Foot
MIK3	02	20	600	#22-#12AWG	5 mm	60
MIK5	03	30	600	#22-#10AWG	6 mm	50
MIK10	04	50	600	#22-#8AWG	8 mm	38
MIK16	05	65	600	#22-#6AWG	10 mm	30
MIK25	06	85	600	#8-#4AWG	12 mm	25
MIKTS4	07	20	300	#22-#12AWG	6 mm	-
MIKSI5	08	10	300	#20-#10AWG	8 mm	-
MIKE4	09	-	-	#22-#10AWG	7 mm	-
MIKE10	09	-	-	#8AWG	8 mm	-
MIKE16	09	-	-	#6AWG	10 mm	-

Contact Factory For Identification Labels

Din Rail Terminal Blocks

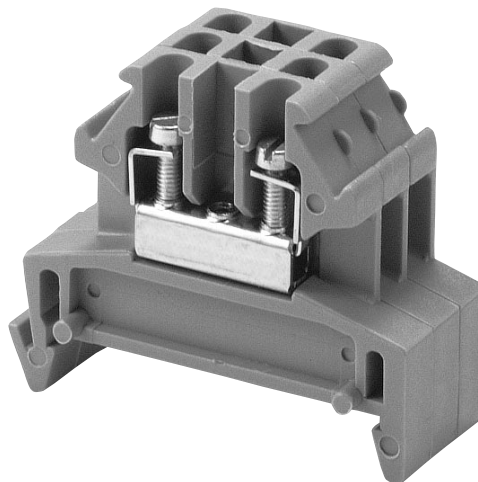
MIK3

5 mm

600 Volts

Specifications:

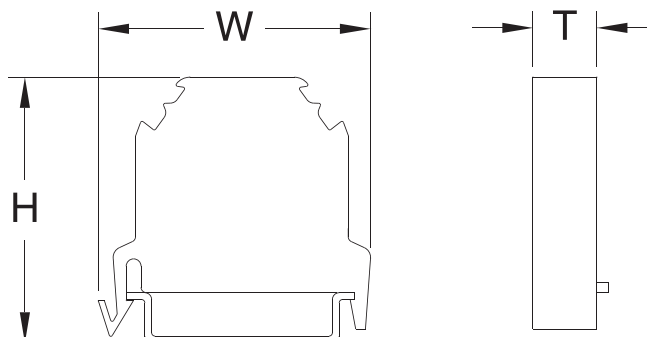
- Insulating Material, Polyamide 6.6, Gray
- Wire Range #22-#12 Awg – 20 Amps
- UL Recognized File No. E62806
- CSA Certified File No. LR700930- 25 Amps
- VDE – 26 Amps
- CEE



Catalog #	Description
MIK3	Center Section
MN35-2	DIN Rail symmetrical 35 X 7.5 mm slotted 2 m long/ steel zinc-plated, yellow chromated
MVB2-2	Jumper 2-position
MVB2-12	Jumper 12-position
MVL2-2	Connecting straps for linking together two adjacent 12 pole jumpers
MIW2	Insulating end sections for covering and insulating the last terminal in an assembly
MIW4	Insulating partition walls for visual and electrical separation of terminal groups
MKAW2	Safety cover with warning label for line terminals which cannot be disconnected
MSK35	End bracket used on both ends of the assembly to hold blocks in place

Dimensions:

H = 36 mm (1.417")
 W = 42 mm (1.653")
 T = 5 mm (.197")



Din Rail Terminal Blocks

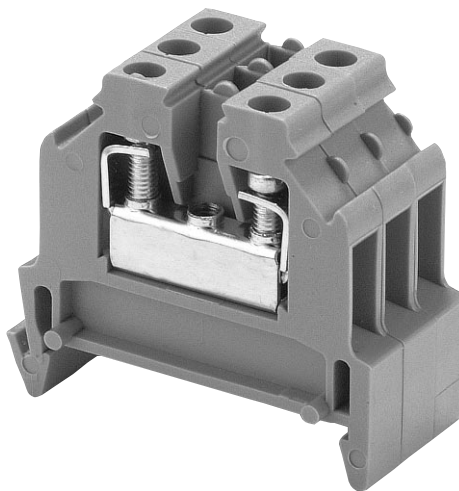
MIK5

6 mm

600 Volts

Specifications:

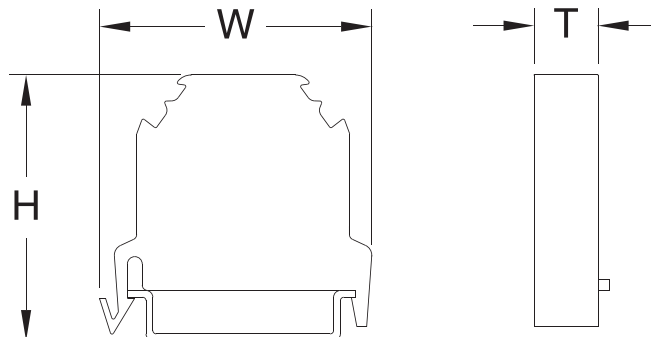
- Insulating Material, Polyamide 6.6, Gray
- Wire Range #22-#10 Awg – 30 Amps
- UL Recognized File No. E62806
- CSA Certified File No. LR700930- 40 Amps
- VDE – 34 Amps
- CE



Catalog #	Description
MIK5	Center Section
MN35-2	DIN Rail symmetrical 35 X 7.5 mm slotted 2 m long/ steel zinc-plated, yellow chromated
MVB4-2	Jumper 2-position
MVB4-12	Jumper 12-position
MVL4-2	Connecting straps for linking together two adjacent 12 pole jumpers
MSTB2	Plug Sockets- test plugs of 2.3 mm Ø
MPST2	Test Plugs- 2.3 mm Ø
MIW4	Insulating end sections for covering and insulating the last terminal
MIW16	Insulating partition walls for visual and electrical separation of terminal groups
MKA4W4	Safety cover with warning label for line terminals which cannot be disconnected
MSK35	End bracket used on both ends of the assembly to hold blocks in place

Dimensions:

H = 38 mm (1.496")
 W = 42 mm (1.653")
 T = 6 mm (.236")



Din Rail Terminal Blocks

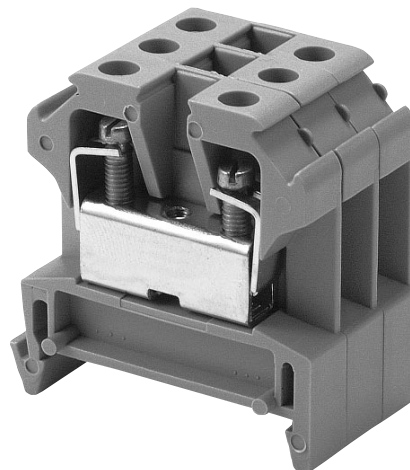
MIK10

8 mm

600 Volts

Specifications:

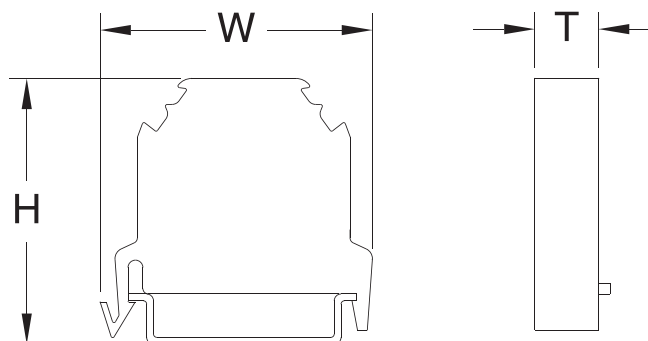
- Insulating Material, Polyamide 6.6, Gray
- Wire Range #22-#8 Awg – 50 Amps
- UL Recognized File No. E62806
- CSA Certified File No. LR700930- 50 Amps
- VDE – 61 Amps
- C€



Catalog #	Description
MIK 10	Center Section
MN35-2	DIN Rail symmetrical 35 X 7.5 mm slotted 2 m long/ steel zinc-plated, yellow chromated
MVB6-2	Jumper 2-position
MVB6-12	Jumper 12-position
MVL6-2	Connecting straps for linking together two adjacent 12 pole jumpers
MSTB2	Plug Sockets- test plugs of 2.3 mm Ø
MPST2	Test Plugs- 2.3 mm Ø
MIW16	Insulating end sections for covering and insulating the last terminal in an assembly
MIW50	Insulating partition walls for visual and electrical separation of terminal groups
MKA10	Safety cover with warning label for line terminals which cannot be disconnected
MSK35	End bracket used on both ends of the assembly to hold blocks in place

Dimensions:

H	=	44 mm (1.732")
W	=	42 mm (1.653")
T	=	8 mm (.315")



Din Rail Terminal Blocks

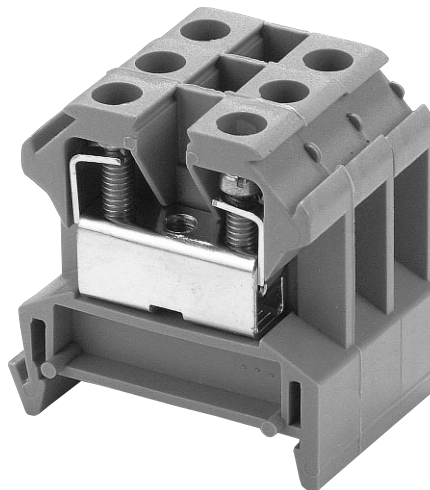
MIK16

10 mm

600 Volts

Specifications:

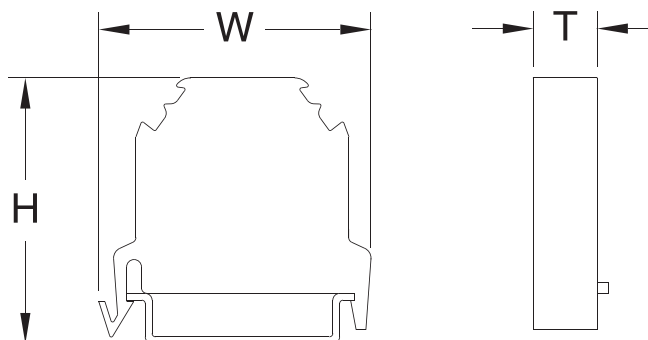
- Insulating Material, Polyamide 6.6, Gray
- Wire Range #22-#6 Awg – 65 Amps
- UL Recognized File No. E62806
- CSA Certified File No. LR700930- 68 Amps
- VDE – 82 Amps
- CE



Catalog #	Description
MIK16	Center Section
MN35-2	DIN Rail symmetrical 35 X 7.5 mm slotted 2 m long/ steel zinc-plated, yellow chromated
MVB16-2	Jumper 2-position
MVB16-12	Jumper 12-position
MVBL16	Removable connecting jumpers for the connection of adjacent lines
MVL16-2	Connecting straps for linking together two adjacent 12 pole jumpers
MIW16	Insulating end sections for covering and insulating the last terminal in an assembly
MIW50	Insulating partition walls for visual and electrical separation of terminal groups
MKA16	Safety covers with warning label for line terminals which cannot be disconnected
MSK35	End bracket used on both ends of the assembly to hold blocks in place

Dimensions:

H	=	44 mm (1.732")
W	=	42 mm (1.653")
T	=	10 mm (.394")



Din Rail Terminal Blocks

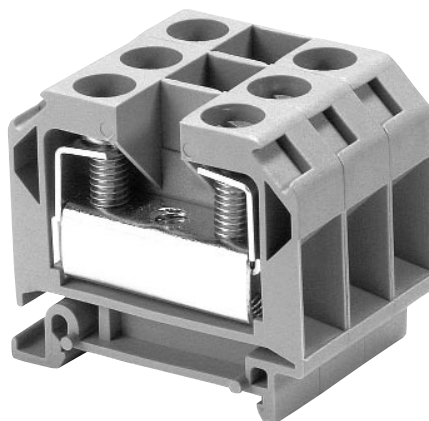
MIK25

12 mm

600 Volts

Specifications:

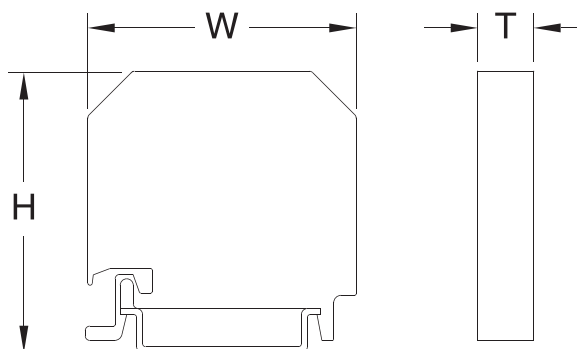
- Insulating Material, Polyamide 6.6, Gray
- Wire Range #8-#4 Awg – 85 Amps
- UL Recognized File No. E62806
- CSA Certified File No. LR700930- 70 Amps
- VDE – 108 Amps
- CEE



Catalog #	Description
MIK25	Center Section
MN35-2	DIN Rail symmetrical 35 X 7.5 mm slotted 2 m long/ steel zinc-plated, yellow chromated
MVB25	Jumpers 2-position
MVL25	Connecting straps- 2 position
MVL25-3	Connecting straps- 3 position
MVBU35	Supports for use under the MVL straps using M 6 X 15 screws
MSTB35	Plug sockets for test plugs of 4 mm Ø
MPST4	Test plugs- 4 mm Ø
MIW50	Insulating end sections for covering and insulating the last terminal in an assembly
MIW70	Insulating partition walls for visual and electrical separation of terminal groups
MKAW25	Safety covers with warning label for supply line terminals which cannot be disconnected
MSK35	End bracket used on both ends of the assembly to hold blocks in place

Dimensions:

H = 48 mm (1.732")
 W = 50 mm (1.653")
 T = 12 mm (.394")



Din Rail Terminal Blocks

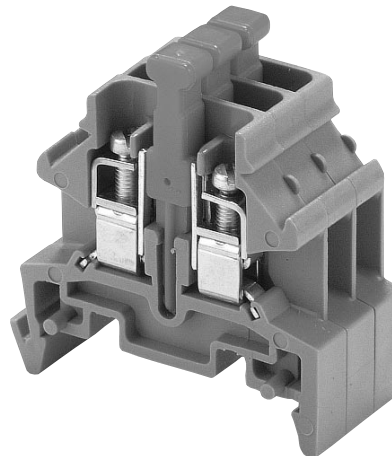
MIKTS4 (Disconnect)

6 mm

300 Volts

Specifications:

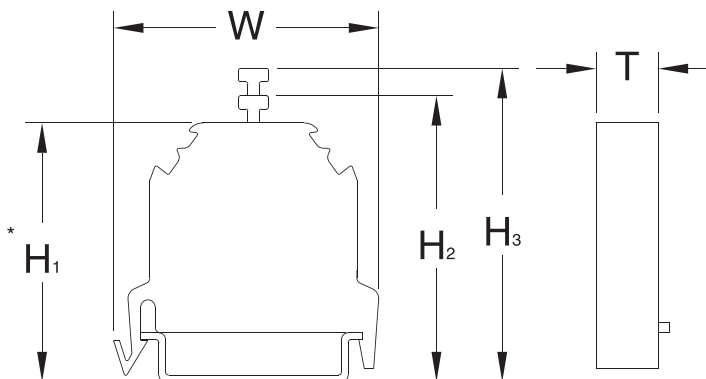
- Insulating Material, Polyamide 6.6, Gray
- Wire Range #22-#12 Awg – 20 Amps
- CSA Certified File No. LR700930
- VDE – 16 Amps
- CE



Catalog #	Description
MIKTS4	Center Section
MN35-2	Din Rail symmetrical 35 X 7.5 mm slotted 2 m long/ steel zinc-plated, yellow chromated
MDSBL (Plug only)	Diode plug- blue with diode 400V, 1A cathode on high voltage side
MDSRT (Plug only)	Diode plug- red with diode 400V, 1A cathode on low voltage side
MPST2	Test Plug- 2.3 mm Ø
MIW4	Insulating end sections for covering and insulating the last terminal in an assembly
MSK35	End bracket used on both ends of the assembly to hold blocks in place

Dimensions:

H ₁	=	39 mm (1.535")
H ₂	=	46 mm (1.800")
H ₃	=	53 mm (2.100")
W	=	42 mm (1.653")
T	=	6 mm (.236")



Din Rail Terminal Blocks

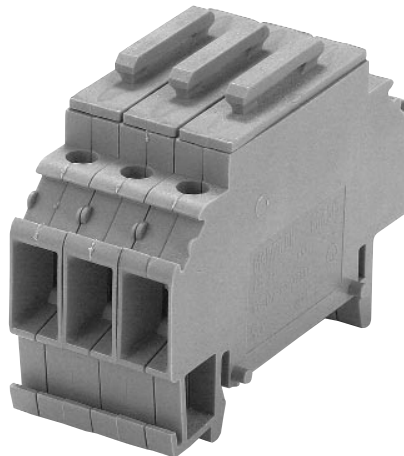
MIKSI5

8 mm

300 Volts

Specifications:

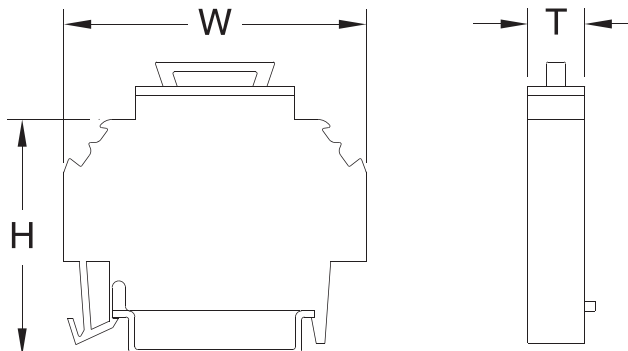
- Insulating Material, Polyamide 6.6, Gray
- Wire Range #22-#10 Awg – 10 Amps
- VDE - 4mm²
- IEC - 6.3 Amps
- UL Recognized – 10 Amps
- C €



Catalog #	Description
MIKSI5	Center Section
MN35-2	Din Rail symmetrical 35 X 7.5 mm slotted 2 m long/ steel zinc-plated, yellow chromated
MSP20	Fuses- 5 x 20; please indicate amps
MSP25	Fuses- 5 x 20; please indicate amps
MIW50	Insulating partition walls for visual and electrical separation of terminal groups
MSK35	End bracket used on both ends of the assembly to hold blocks in place

Dimensions:

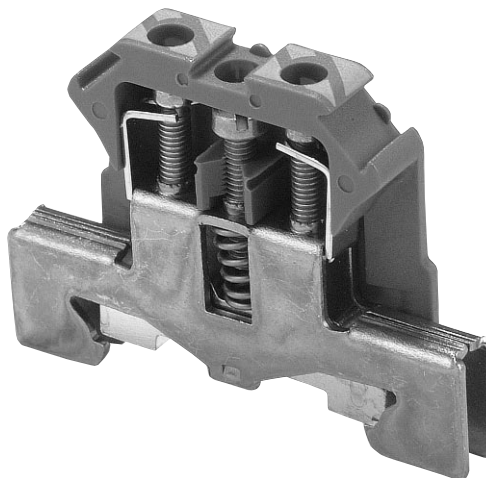
H = 47 mm (1.850")
 W = 60 mm (2.362")
 T = 8 mm (.315")



Din Rail Terminal Blocks

MIKE4, MIKE10, MIKE16

7 mm, 8 mm, 10 mm

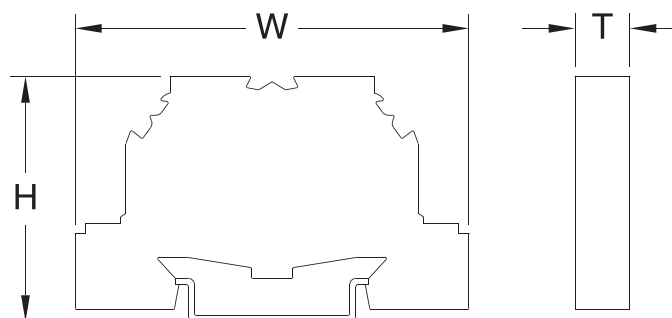


Specifications:

- Insulating Material, Polyamide 6.6, Green/Yellow
- Wire Range
 - MIKE4 - #22-#10 Awg
 - MIKE10 - #8 Awg
 - MIKE16 - #6 Awg
- UL Recognized File No. E62806
- CSA Certified File No. LR700930
- VDE
- C€

Dimensions:

H	=	MIKE4	38 mm (1.496")
		MIKE10	44 mm (1.771")
		MIKE16	44 mm (1.732")
W	=		56 mm (2.204")
T	=	MIKE4	7 mm (.275")
		MIKE10	8 mm (.315")
		MIKE16	10 mm (.394")



DIN Rail Adapter

Accessory to Secure Surface Mount Devices on DIN Rail:

- Din Adapter is Made of Acetal Resin Material
- High Mechanical Strength and Rigidity
- Good Resilience and Resistance to Creep
- Excellent Dimensional Stability
- Excellent Low Temperature Toughness
- Wide End-Use Temperature Range



Assembly Method:

- Press Adapter onto Rail, Fasten Component with #8 Self Tapping Screw (Screw Not Supplied)
- Assembly Locks Firmly onto DIN Rail
- The Adapter will Work with 140 Series, M Fuse Holder, Class G, Class CC, Class H 250A 30A, Class R 250V 30A Holders
- Consult Factory for Others

Catalog Number	Standard Package
DIN R-1	100

