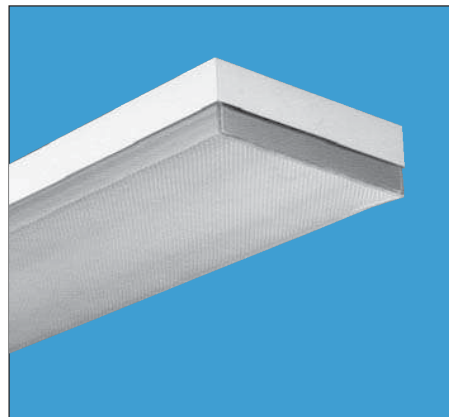


Surface Commercials

AW



Architectural Wraparounds

Intended Use

For surface or suspended applications that require a low-profile architectural appearance. Provides high vertical and horizontal illumination for walkways, corridors, offices and retail applications.

Features

Flat-bottom acrylic prismatic diffuser with sonic-welded, injection-molded, luminous ends.

Diffuser held by four torsion springs. Hinges or latches from either side for easy cleaning and service.

Choice of width — models available with 2, 3 or 4 lamps. For 5¼" width, see companion CA Series.

Optional high-impact-resistant acrylic (AR) diffuser includes 50% DR additive for strength.

Two 4-foot diffusers provided on tandem models.

White housing standard, black and special colors optional.

For surface or stem mounting, unit or row installation. Order two hangers for 2-lamp and 4-lamp models, four hangers for 3-lamp models.

Listings — UL Listed (standard). CSA Certified or NOM Certified (see Options).

Ordering Information

Example: **AW 2 32 AR 120 GEB**

Series	Number of lamps	Lamp type	Diffuser type	Voltage	Options
<b>AW</b> Standard width	<b>2, 3, 4</b> Not included.	<b>32</b> 32W T8 (48")	(blank) Prismatic	<b>120</b>	<b>1/3</b> One 3-lamp ballast
<b>2AW</b> 2 lamps in wide housing		<b>40</b> 40W T12 (48")	<b>AR</b> High-impact prismatic	<b>277</b>	<b>1/4</b> One 4-lamp ballast
				<b>347</b>	<b>GEB</b> Electronic ballast, ≤20% THD
				<b>MVOLT*</b>	<b>GEB10IS</b> T8 electronic ballast, ≤10% THD, instant start
				Others available.	<b>GEB10RS</b> T8 electronic ballast, ≤10% THD, rapid start
				* 120-277V. Must specify GEB10IS.	<b>CSA</b> CSA Certified
					<b>NOM</b> NOM Certified
					See page 97 for others.

For tandem double-length unit, add prefix T. Example: **TAW**



Availability and Dimensions

Series	Lamps per cross section	Lamps per fixture	Lamp length in.	Width in.(cm)	Depth in.(cm)	Length in.(cm)
AW	2	2	48	11¼ (28.6)	3 <sup>5</sup> / <sub>16</sub> (8.4)	48 (121.9)
	3	3	48	16¾ (42.5)	3 <sup>5</sup> / <sub>16</sub> (8.4)	48 (121.9)
	4	4	48	16¾ (42.5)	3 <sup>5</sup> / <sub>16</sub> (8.4)	48 (121.9)
2AW	2	2	48	16¾ (42.5)	3 <sup>5</sup> / <sub>16</sub> (8.4)	48 (121.9)
TAW	2	4	48	11¼ (28.6)	3 <sup>5</sup> / <sub>16</sub> (7.9)	96 (243.8)
	3	6	48	16¾ (42.5)	3 <sup>5</sup> / <sub>16</sub> (7.9)	96 (243.8)
	4	8	48	16¾ (42.5)	3 <sup>5</sup> / <sub>16</sub> (7.9)	96 (243.8)
T2AW	2	4	48	16¾ (42.5)	3 <sup>5</sup> / <sub>16</sub> (7.9)	96 (243.8)