

MS5HB MS8



Intended Use

Intended for use in retail stores, warehouses and manufacturing applications where high lumen package in a compact fixture is required. Recommended for mounting heights up to 30'. **Certain airborne contaminants can diminish integrity of acrylic. Refer to Acrylic Environmental Compatibility tables on pages 794-795 for suitable uses.**

Construction

Channel and louvers are formed from cold-rolled, 20-gauge steel. Designed for simple servicing, louver assembly hinges remain attached and hinge down

providing easy access into the optical system. Convenient access plate located on the back of the the channel for easy access to wiring components.

Finish: High-gloss, baked white enamel finish. Five-stage, iron phosphate pretreatment ensures superior paint adhesion and rust resistance.

Optics

The Narrow Distribution (ND) includes a parabolic reflector system to provide high vertical and good horizontal illumination for aisle or rack lighting. The wide distribution (WD) is ideal for general area lighting at higher mounting

heights or where widespread distribution is preferred. Both distributions are available with white straight blade louver for additional shielding and brightness control. Uplight component softens ceiling appearance to reduce the "cave effect."

Electrical

Thermally protected, resetting, Class P, HPF, Non PCB, UL Listed, and Canadian Certified. A+ sound rated electronic ballast. AWN TFN or THHN wire used through-out, rated for required temperatures.

Sockets feature rotating collars and enclosed contacts.

Installation

A variety of mounting arrangements are available including tong hangers, aircraft cables and stems. Suitable for mounting in continuous row or individual mounting. End caps include knockouts for through wiring and fixture attachment in row mounting applications.

Listings

UL Listed. CSA optional; (consult factory).

Warranty: Guaranteed for one year against mechanical defects in manufacturing.

ORDERING INFORMATION

For shortest lead times, configure products using **bolded options**.

Example: MS5HB 3 54T5HO SBL ND MVOLT 1/41/2 GEB10PS

Series		Number of lamps ^{5,6}	Lamp type ⁵	Reflector	Distribution ▶▶▶
MS5HB	T5 low-profile direct/indirect	2	32 32W T8 (48")	(blank) No louver	ND Narrow
MS5HBST	T5 low-profile solid top ¹	3	54T5HO 54W T5HO (46")	SBL White straight blade louver assembly	WD Wide
MS8	T8 low-profile direct/indirect	Not included			
MS8ST	T8 low-profile solid top				
For tandem double-length unit, add prefix T. Example: TMS5HB					
▶ Voltage	Ballast configuration	Ballast	Options		
MVOLT	(blank) All 2-lamp ballasts ²	GEB10PS T5HO electronic ballast, ≤10% THD, programmed rapid start	GLR	Internal fast blow fuse ³	
347	1/3 One 3-lamp ballast	GEB10IS T8 electronic ballast, ≤10% THD, instant-start	GMF	Internal slow blow fuse ³	
480	1/4 One 4-lamp ballast		EL55	T5 emergency battery pack (nominal 390-700 lumens) ⁴	
	1/41/2 One 4-lamp ballast and one 2-lamp ballast		CSA	Meets Canadian standards	
	2/3 Two 3-lamp ballasts		MSI	Occupancy sensor pre-wired ^{3,7}	

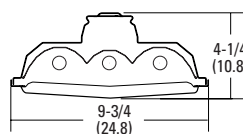
ADDITIONAL INFORMATION

For additional product information, visit www.lithonia.com.

CONFIGURATIONS

SERIES	NUMBER OF LAMPS ⁶	LAMPS PER FIXTURE	LAMP TYPE	WIDTH	DEPTH	LENGTH
MS5HB	2, 3	2, 3	54T5HO	9-3/4 (24.8)	4-1/4 (10.8)	46-1/8 (117.2)
TMS5HB	2, 3	4, 6	54T5HO	9-3/4 (24.8)	4-1/4 (10.8)	92-1/8 (234.0)
MS5HBST	2	2	54T5HO	9-3/4 (24.8)	4-1/4 (10.8)	46-1/8 (117.2)
TMS5HBST	2	4	54T5HO	9-3/4 (24.8)	4-1/4 (10.8)	92-1/8 (234.0)
MS8	2, 3	2, 3	32	9-3/4 (24.8)	4-1/4 (10.8)	48 (121.8)
TMS8	2, 3	4, 6	32	9-3/4 (24.8)	4-1/4 (10.8)	96 (243.8)

Drawings are for dimensional detail only and may not represent actual mechanical configuration. Dimensions are shown in inches (centimeters) unless otherwise noted.



ACCESSORIES

ORDER SEPARATELY

MSHBAC	Adjustable aircraft cable support (non-feed), (specify length as 36, 72 or 120 inches)
MSHBACF	Aircraft cable feed and support, (specify length as 36, 72 or 120 inches)
THMS5HB	Tong hanger
SQ	Swivel stem hanger (specify length in 2" increments)
HC36	Chain hanger, 36"
WGMS5HBZ	4' wire guard for MS5HB, zinc coated. (two required for 8' lengths)
WGMS8Z	4' wire guard for MS8, zinc coated. (two required for 8' lengths)

Notes

- Available in 2-lamp only.
- Odd lamp configurations will include a 2 lamp ballast.
- Specify voltage.
- 3-lamp 4' fixtures require 1/3 ballast.
- See Configurations table for availability.
- Number of lamps per 4' section.
- Use of programmed rapid start ballast recommended to avoid shortened lamp life.

FEATURES & SPECIFICATIONS

INTENDED USE — The MS8 is ideal for low to medium mounting heights where energy efficiency and a shielded or an open optical system is required for high light levels and excellent color. The enhanced performance of the MS8 provides improved vertical and horizontal illumination in aisle or warehouse applications. The MS8 is ideal for retail, warehouse, manufacturing or any application where a high lumen package in a compact fixture design is required.

Certain chemicals that may exist in end-user locations release airborne contaminants that can impact the integrity and safety of key fixture components. Please refer to the environmental compatibility chart located in the Product Selection Guide and/or the company website to ensure that these chemical interactions are considered when selecting fixtures. For additional information please consult an authorized factory representative. **Certain airborne contaminants can diminish integrity of acrylic.**

ATTRIBUTES — Clean and unassuming appearance with shielding provides a decorative approach that provides a powerful lighting package with high light levels.

CONSTRUCTION — Channel and louvers are formed from cold-rolled, 20-gauge steel. Fixture is asbestos-free. Compact sockets feature rotating collars and enclosed contacts. End caps include knockouts for through wiring and fixture attachment in row mounting applications.

Designed for simple installation and servicing, louver assembly hinges remain attached and hinge down to provide easy access into the optical system. Convenient access plate is located on the back of the channel for easy access to the wiring compartment.

FINISH — High-gloss, baked white enamel finish. Five-stage iron-phosphate pretreatment ensures superior paint adhesion and rust resistance.

OPTICAL SYSTEM — Available to meet individual lighting application requirements with variety of optical systems and lamp configurations. The Narrow Distribution (ND) includes a Miro4™ parabolic reflector system to provide high vertical and good horizontal illumination. Ideal for aisle or rack lighting. The Wide Distribution (WD) is ideal for general area lighting at higher mounting heights or where widespread distribution is preferred. Both distributions are available with white straight blade louver for additional shielding and brightness control. Optional uplight component softens ceiling appearance and reduces the "cavern effect".

ELECTRICAL SYSTEM — Thermally protected, resetting, Class P, HPF, non-PCB, UL listed and CSA certified. A+ sound rated electronic ballast. AWN, TFN or THHN wire used throughout, rated for required temperatures.

INSTALLATION — A variety of mounting arrangements are available including tong hangers, aircraft cables and stems. Suitable for mounting in continuous row or individual mounting. End caps include knockouts for through wiring and fixture attachment in row mounting applications.

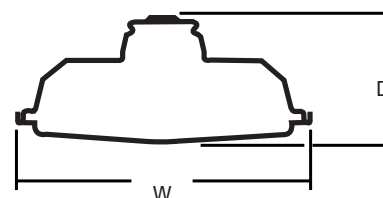
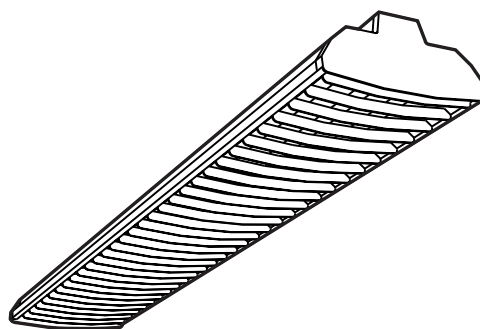
LISTING — UL listed. CSA optional; (consult factory).

WARRANTY — Guaranteed for one year against mechanical defects in manufacture.

T8 Direct Louver

MS8

4' or 8' Lengths
2 or 3 Lamps



Specifications

Length: 48 (1219)
96 (2438)
Width: 9-3/4 (248)
Depth: 4-1/4 (108)
Weight: 27.8 lbs (12.6 kg)

All dimensions are inches (millimeters).

Specifications subject to change without notice.

ORDERING INFORMATION

For shortest lead times, configure product using **standard options (shown in bold)**.

Example: MS8 3 32 SBL WD MVOLT 1/3 GEB10IS

Series	Number of lamps	Lamp type	Configuration	Distribution	Voltage	Options
MS8 10% up-light						
MS8ST Solid top	2	32 32W T8 (48")	(blank) No louver	ND Narrow	120	1/3 One 3-lamp ballast
For tandem double-length unit, add prefix T. Example: TMS8	3		SBL White straight blade louver assembly	WD Wide	277	1/4 One 4-lamp ballast
	Not included.				347	GEB T8 instant start electronic ballast, <20% THD
					MVOLT¹	GEB10IS T8 instant start electronic ballast, <10% THD
						GEB10RS T8 rapid start electronic ballast, <10% THD

Accessories

Order as separate catalog number.

MSHBAC_	Adjustable aircraft cable system (specify 36, 72 or 120 inches) ⁴
MSHBACF_	Adjustable aircraft cable system with power feed (specify length as 36, 72 or 120 inches) (three-wire cable) ⁴
MSHBAC2F_	Adjustable aircraft cable system with power feed (four-wire cable) (specify length as 36, 72 or 120 inches) ⁴
SQ_	Swivel-stem hanger (specify lengths in 2" increments).
HC36	Chain hangers (1 pair, 36" long).
THMS5HB	Tong hangers.
WGMS8Z	4' wire guard, zinc coated.

NOTES:

- MVOLT 120-277 only.
- Specify voltage.
- Meets codes that require in fixture disconnect.
- One cable per package.

EL	Emergency battery pack (nominal 300 lumens)
GLR	Internal fast-blow fuse ²
MSI	Occupancy sensor pre-wired ²
CSA	Listed and labeled to comply to Canadian standards
NOM	Listed and labeled to comply with Mexican standards
BDP	Ballast disconnect ³

MS8 T8 Direct Louver

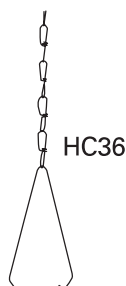
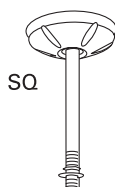
MOUNTING DATA

For unit or row installation, surface or stem mounting.

Unit installation — Minimum of two hangers required.

Row installation — One hanger per channel plus one per row required.

Hanging devices illustrated below.



DIMENSIONS

A = 7/8" (22) KO

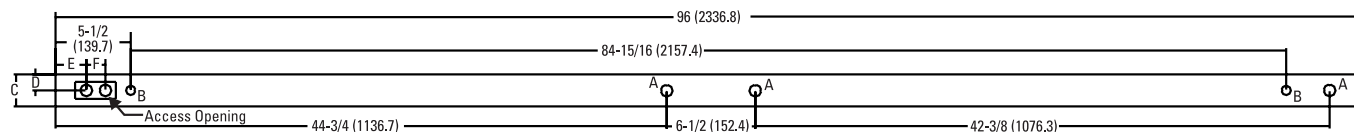
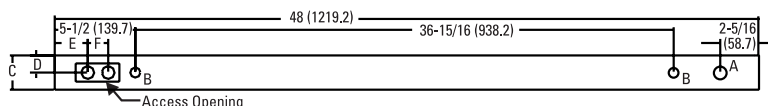
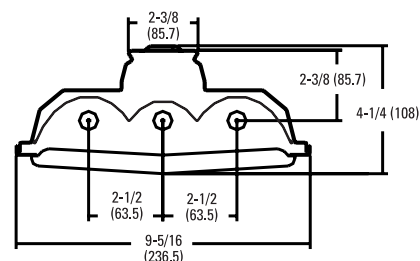
B = 11/16" (18) KO

C = 2-3/8" (60)

D = 1-3/16" (30)

E = 2-5/16" (59)

F = 1-3/8" (35)



PHOTOMETRICS

Calculated using the zonal cavity method in accordance with IESNA LM41 procedure. Floor reflectances are 20%. Lamp configurations shown are typical. All data based on 25°C. Full photometric data on these and other configurations available upon request.

MS8ST 3 32T8 SBL WD

Report LTL 10408

Lumens per lamp - 2850 – Lum. eff. - 81.3%

S/MH (along) 1.2 (across) 1.4

Coefficient of Utilization

	80%			70%			50%			50%		
	70%	50%	30%	70%	50%	30%	50%	30%	10%	30%	10%	10%
0	97	97	97	95	95	95	90	90	90			
1	89	85	81	86	83	80	79	77	74			
2	81	74	68	78	72	67	69	65	61			
3	73	65	58	71	64	57	61	56	52			
4	67	57	50	65	56	50	54	49	44			
5	62	51	44	60	50	44	49	43	38			
6	57	46	39	56	45	39	44	38	33			
7	53	42	35	51	41	34	40	34	29			
8	49	38	31	48	38	31	37	31	26			
9	46	35	28	45	35	28	34	28	24			
10	43	32	26	42	32	26	31	25	21			

Zonal Lumens Summary

Zone	Lumens	%Lamp	%Fixture
0-30	1915	22.4	27.5
0-40	3141	36.7	45.2
0-60	5554	65.0	79.9
0-90	1401	16.4	20.1
90-180	0	0.0	0.0
0-180	6955	81.3	100.0