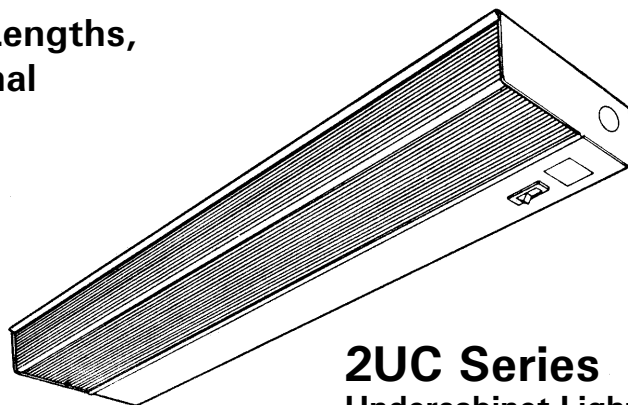


## USA / Canada - Undercabinet Light, 2UC Series

Undercabinet Light, T5 T8 or T12 Lamps, 4 Lengths,  
Convenience outlet and rocker switch optional

### FEATURES & SPECIFICATIONS

- 1-3/4" [44.5] deep design uses T8 or T12 lamps.
- Ideal for work stations and under cabinets, unit or row mounting.
- Low brightness, linear prism acrylic lens standard.
- Convenience outlet and on/off rocker switch available.
- Diffuser snaps easily into fixture body flanges.
- Certain airborne contaminants can diminish integrity of acrylic. See Acrylic Environmental Compatibility table for suitable uses.



**2UC Series**  
Undercabinet Light

**BALLAST** — Thermally-protected, resetting, Class P, HPF, non-PCB, UL listed ballast is standard on all T8 and T12 30W and 40W fixtures. Sound rating A. Standard combinations are CBM approved.

**WIRING & ELECTRICAL** — Fixture bears UL label and is suitable for damp locations. AWM, TFN or THHN wire used throughout, rated for required temperatures.

**MATERIALS** — Metal parts manufactured from code gauge steel. Diffuser is 100% acrylic. No asbestos is used in this product.

**FINISH** — Five-stage iron-phosphate pretreatment ensures superior paint adhesion and rust resistance. High gloss, baked white enamel finish.

**LISTING** — UL listed. Labeled I.B.E.W. — A.F. of L.

Fixture guaranteed for one year against mechanical defects in manufacture.

Lead times will vary depending on options selected. Consult with our sales office.

### ORDERING INFORMATION

Example: 2UC 1 25 MVOLT

2UC	1				
Series	Lamps	Lamp Wattage / Type <sup>5,6</sup>		Lens	Voltage
2UC	1 Number of Lamps (Not included)	15	Nominal 15W T12 (18") <sup>1,2,3</sup>	(blank) Acrylic, milk white	120
		17	Nominal 17W T8 (24")	AR High impact resistant acrylic	277
		25	Nominal 25W T8 (36")		347
		32	Nominal 32W T8 (48")		MVOLT
		14T5	Nominal 14W T5 (22") <sup>4</sup>		Others available, Contact our sales office.
		21T5	Nominal 21W T5 (34") <sup>4</sup>		
		28T5	Nominal 28W T5 (46") <sup>4</sup>		
Options					
		LP	Cool white lamp (installed)		
		SWR	Rocker switch (120V only)		
		CO	Convenience outlet (120V only)		
		CSA	Labeled for shipment to Canada		
		GLR	Internal fast blow fuse		
		GEB	Electronic ballast, < 20% THD		
		GEB10IS	Instant start electronic ballast, < 10% THD		
		GEB10PS	Program start electronic ballast, < 10% THD		

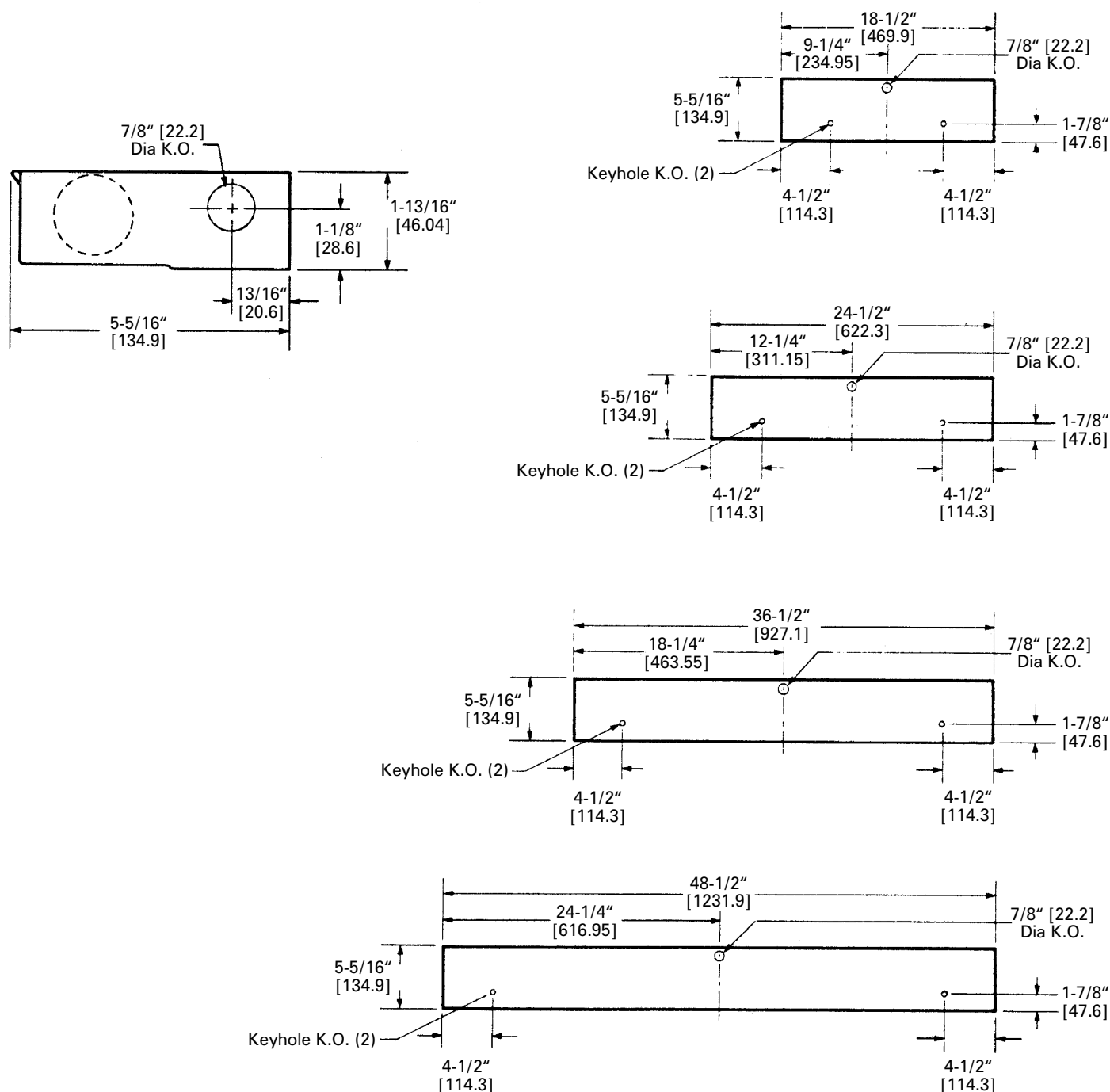
### NOTES:

- 1 Low power factor ballast (LPF) standard. High power factor and electronic ballast (HPF) optional. HPF, LPF or GEB must be specified in options box.
- 2 277V configurations must be ordered with electronic ballast.
- 3 15W not available with MVOLT.
- 4 T5 configurations require GEB10PS.
- 5 Nominal lamp dia. (e.g. T8 = 8 x 1/8" = 25.4mm),
- 6 Nominal lamp length in (inches).

*Technical Data and Specifications are Subject to Change without Notice. Dimensions in inches [mm].*

### USA / Canada - Undercabinet Light, 2UC Series

#### MOUNTING DATA



Technical Data and Specifications are Subject to Change without Notice. Dimensions in inches [mm].

Certain chemicals that may exist in end-user locations release airborne contaminants that can impact the integrity and safety of key fixture components that contain acrylic material. Immediate damage may occur such as crazing, cracking, permeation losses and mechanical failure. Products with visually noticeable deterioration have diminished integrity and must be replaced immediately with a more suitable product for the application.

This table identifies the most common chemicals and is not intended to be all-inclusive. Exposure to compounds identified as "Not Acceptable" will void all warranties associated with the product. Acrylic components should not be used in areas where these chemicals are used and where these

## Acrylic Compatibility

chemicals become mists or airborne vapors. Ensure that chemical interactions are considered when selecting fixtures. For additional information please consult an authorized factory representative.

NOT ACCEPTABLE			ACCEPTABLE	
Acetaldehyde, 100%	Dibutyl Sebacate	Petroleum Ether (100-120C)	2-Ethylhexyl Sebacate	Nitrogen Monoxide Gas
Acetates	Diethyl Ether	Phenois	Acetic Acid 5%	Olefric Carboic Acids
Acetic Acid, Glacial, 100%	Dimethyl Formamide	Phenol, Aqueous, 5%	Ammonia-based Cleaners	Oleic Acid
Acetic Anhydride	Dioctyl Sebacate	Phosphoric Acid, 95% @ 20C	Ammonia Gas	Olive Oil
Acetone	Dioxane	Phthalates	Ammonium Hydroxide, 28%	Oxalic Acid, 100%
Acetonitrile	Ether	Pyridine	Ammonium Nitrate	Oxygen Gas
Acetophenone	Ethyl Acetate	Sodium Carbonate, 2%	Ammonium Phosphate	Ozone Gas
Acrylic Paints	Ethyl Alcohol, Concentrated	Sodium Carbonate, 20%	Aniseed, Bay Leaves, Nutmeg	Paraffin, Medicinal
Alcohol, Allyl	Ethyl Bromide	Sulfur Dioxide, Liquid	Anti-freeze	Pepper, Cinnamon, Onions
Alcohol, Amyl	Ethyl Butyrate	Sulfuric Acid, 98%	Beer	Phosphoric Acid, 10% @ 20C
Alcohol, Benzyl	Ethylene Bromide	Sulfurous Acid, Concentrated	Bleaching Power Paste	Photographic Baths
Alcohol, Ethyl, 100%	Ethylene Dibromide	Tincture of Iodine, 5%	Bleaching Powder Solution, 2%	Polishing Compounds
Alcohol, Ethyl, 50%	Ethylene Oxide (Moist)	Toluene	Calcium Hypochlorite	Potassium Chlorate
Alcohol, Isopropyl, 100%	Glass Cleaners	Transformer Oil	Car Wash Detergent	Potassium Cyanide
Alcohol, Methyl, 10%	Glycol	Trichloroethane	Carbon Dioxide Gas	Potassium Dichromate, 10%
Alcohol, Methyl, 100%	Hydrogen Peroxide, 28%	Trichloroethylene	Carbon Monoxide Gas	Potassium Hydroxide @ 20C
Alcohol, Methyl, 50%	Hydrogen Peroxide, 3%	Turpentine	Caustic Potash	Potassium Permanganate
Alcohol, N-Butyl	Iron Perchloride	Unleaded Gasoline	Chlorine Based Cleaners	Potassium Sulfite
Amyl Acetate	Isocane	Vegetable Oil	Chlorine, Aqueous, 2%	Power Steering Fluid
Aniline	Isopropyl Alcohol	Xylene	Citric Acid, 10%	Propylene
Aviation Fuel (100 Octane)	Lacquer Thinner		Coffee	Pure-oil Paints
Benzaldehyde	Lactic Acid Butyl Ester		Cooking Oil	Silicone Oil
Benzene	Mercury Chloride		Cottonseed Oil	Silver Nitrate
Benzoic Aldehyde	Meta-Cresol		Diethylene Glycol	Soap Suds
Brake Fluid	Methanol, 15%		Epoxy Adhesives	Soda
Bromine Gas	Methanol, Concentrated		Ethyl Alcohol, 15%	Sodium Chloride, 10%
Butanol	Methyl Benzoate		Ethylene Glycol E	Sodium Cyanide
Butraldehyde	Methyl Chloride		Ethylene Oxide (Dry)	Sodium Fluoride
Butyl Acetyl Ricinoleate	Methyl Cyclohexanol		Ferric Chloride, Aqueous, 10%	Sodium Hydroxide, 60%
Butyl Stearate	Methyl Ethyl Ketone		Formaldehyde, Aqueous, 40%	Sodium Nitrate
Carboic Acid	Methyl Naphthalene		Fruit Juice	Sodium Thiosulphate, 40%
Carbon Disul de	Methyl Salicylate		Glycerol	Stearic Acid
Carbon Disulfide	Methylamine		Heptane	Sulfur Dioxide, Dry Gas
Cellulose Paints	Methylene Dichloride		Hexane	Sulfuric Acid, 30%
Chlorinated Hydrocarbons	Mineral Oil		Hydrochloric Acid, 38%	Sulfurous Acid, 5%
Chlorinated Solvents	Motor Fuel Mixture, with Benzene		Kerosene	Tararic Acid, 50%
Chlorine Gas	Nail Polish		Lactic Acid	Transmission Fluid
Chlorophenol	Naphtha		Metal Carbonates	Tricresyl Phosphate
Chromic Acid, 40%	N-Butyric Acid, 100%		Metal Chlorides	Triethyl Amine
Cloves	Nitric Acid, 40%		Metal Sulfates	Vinegar
Cosmoline Removers	Nitric Acid, 70%		Methane Gas	Water, Mineral Water
Cresol	Nitrobenzene		Milk	Wax Polish
Cyclohexane	N-Octane		Milk, Chocolate	White Spirit
Cyclohexanone	Organic Solvents		Motor Fuel Mixture, without Benzene	Whitewash
Cyclohexene	Paint Removers		Motor Oil	Wine
Detergent Solution	Paint Thinner		Natural Gas	
Diacetone Alcohol	Perchloroethylene		Nitric Acid, 10%	
Diamyl Phthalate			Nitrogen Dioxide Gas	

The statements, technical information and recommendations obtained herein are believed to be accurate as of June 1, 2009. Since the conditions and methods of use of the product and of the information referred to herein are beyond our control, Acuity Brands Lighting expressly disclaims any and all liability. NO WARRANTY OF FITNESS FOR ANY PARTICULAR PURPOSE, WARRANTY OF MERCHANTABILITY OR ANY OTHER WARRANTY, EXPRESS OR IMPLIED, IS MADE CONCERNING THE GOODS DESCRIBED OR THE INFORMATION PROVIDED HEREIN. The user should thoroughly test any application before commercialization.