

FEATURES & SPECIFICATIONS

INTENDED USE

High performance deep-cell parabolic luminaires for superior light control, visual comfort, and light cut-off in open area applications. Especially recommended for applications needing multi-level switching.

ATTRIBUTES

Choice of low iridescent diffuse or specular louver finishes. Also available with Achroma™ non-iridescent louver finish.

Models available to meet IES RP-1 minimum luminance criteria for office lighting systems in VDT applications. Optimax products are available to meet preferred criteria.

Over-under two-lamp models provide uniform louver illumination in dual-level switching applications.

CONSTRUCTION

Black reveal provides floating louver appearance, conceals optional air-supply slots. Optional heat-removal dampers and air-pattern control blades allow airflow control.

T-hinges die-formed for maximum strength. Latches spring-loaded, concealed in reveal.

Integral T-bar safety clips hold T-bar securely — no fasteners required to install.

Housing formed from cold-rolled steel. Louvers formed from anodized aluminum. No asbestos is used in this product.

FINISH

Five-stage iron-phosphate pretreatment ensures superior paint adhesion and rust resistance. Painted parts finished with high-gloss, baked white enamel.

ELECTRICAL SYSTEM

Thermally-protected, resetting, Class P, HPF, non-PCB, UL Listed, CSA certified ballast is standard. Energy saving and electronic ballasts are sound rated A.

Luminaire is suitable for damp locations. AWM, TFN or THHN wire used throughout, rated for required temperatures.

LISTING

UL Listed (standard). CSA Certified or NOM Certified (see Options).

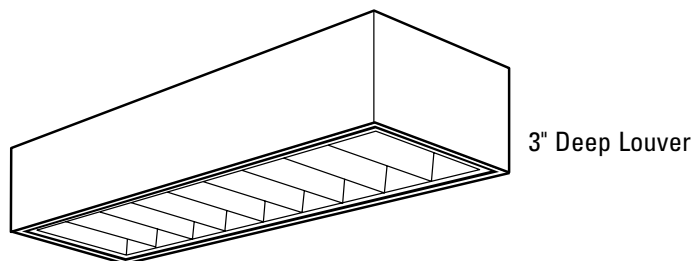
WARRANTY

Guaranteed for one year against mechanical defects in manufacture.

Specifications subject to change without notice.

PARAMAX® High-Performance Surface Mount

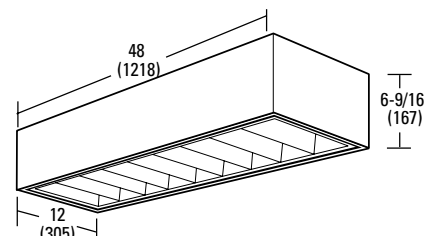
HPM3X 1'x4'



3" Deep Louver

Specifications

Length: 48 (1218)
Width: 12 (305)
Depth: 6-9/16 (167)
Weight: 20lbs (9 kg)



All dimensions are inches (millimeters).

ORDERING INFORMATION

Example: **HPM3X 2 32 9LD 120 GEB**

HPM3X					
Series	Lamp type	Number of cells	Louver finish	Voltage	Options
HPM3X High Performance Paramax 3" deep cell parabolic, 1' wide, surface mount	32 32W T8 (48") 40 40W T12 (48")	6, 8, 9	LD Low iridescent diffuse silver LS Low iridescent specular silver C Diffuse gold (champagne)	120, 277, 347 Others available.	GEB Electronic ballasts, ≤20% THD GEB10IS Electronic ballast, ≤10% THD, Instant Start GEB10RS Electronic ballast, ≤10% THD, Rapid Start EL Emergency battery pack (nominal 300 lumens; see Fluorescent Battery Packs tab) GLR Internal fast-blow fuse GMF Internal slow-blow fuse LP__ Lamped; specify lamp type and color FTC Full top cover CRE Continuous row, end (KO in shroud end) CRM Continuous row, middle (KOs in both ends) PAF Painted after fabrication (white enamel) CSA CSA Certified NOM NOM Certified
	Number of lamps 1, 2 Not included.				

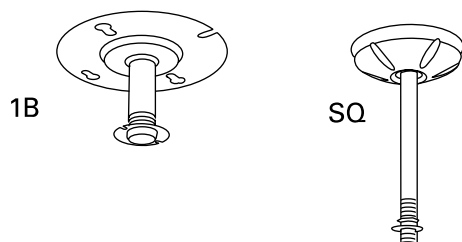
HPM3X 1'x4' Surface Mount, High-Performance 3" Louver Family

MOUNTING DATA

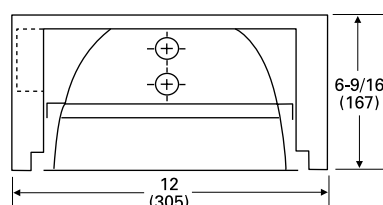
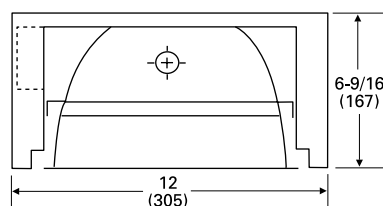
Continuous row mounting of flanged units requires CRE and CRM trim options (see Options).

Surface or suspended mounting. Unit installation assumed.

UNIT INSTALLATION — Four hanging devices required on fixtures with offset wireway or side-mounted ballast.



DIMENSIONS



PHOTOMETRICS

Calculated using the zonal cavity method in accordance with IESNA LM41 procedures. Floor reflectances are 20%. Lamp configurations shown are typical. Full photometric data on these and other configurations available upon request.

HPM3 G B 2 32 9LD

Report LTL 5758 – Lumens per lamp = 2900

S/MH (along) 1.1 (across) 1.8

Coefficient of Utilization

	80%			70%			50%		
Ceiling	70%	50%	30%	70%	50%	30%	50%	30%	10%
0	73	73	73	71	71	71	68	68	68
1	69	67	65	67	65	64	63	61	60
2	64	61	58	63	60	57	58	55	53
3	60	55	51	59	54	51	52	49	47
4	56	50	45	54	49	45	47	44	41
5	51	45	40	50	44	40	43	39	36
6	47	40	36	46	40	35	39	35	32
7	44	36	31	43	36	31	35	31	28
8	40	32	27	39	32	27	31	27	24
9	37	29	24	36	28	24	28	24	21
10	34	26	21	33	26	21	25	21	18

Zonal Lumens Summary

Zone	Lumens	%Lamp	%Fixture
0-30	1168	20.1	32.7
0-40	2045	35.3	57.3
0-60	3471	59.8	97.3
0-90	3566	61.5	100.0
90-180	0	0	0
0-180	3566	61.5	100.0

HPM3 G B 1 32 8LD

Report LTL 5218 – Lumens per lamp = 2900

S/MH (along) 1.2 (across) 1.7

Coefficient of Utilization

	80%			70%			50%		
Ceiling	70%	50%	30%	70%	50%	30%	50%	30%	10%
0	79	79	79	77	77	77	74	74	74
1	75	72	71	73	71	69	68	67	66
2	70	66	63	69	65	62	63	60	58
3	66	60	56	64	59	56	58	54	52
4	61	55	50	60	54	50	52	49	46
5	57	50	45	55	49	44	48	44	41
6	53	45	40	51	45	40	43	39	36
7	48	41	36	47	40	35	39	35	32
8	45	36	31	44	36	31	35	31	28
9	41	33	28	40	32	27	31	27	24
10	38	29	24	37	29	24	28	24	21

Zonal Lumens Summary

Zone	Lumens	%Lamp	%Fixture
0-30	686	23.6	35.6
0-40	1222	42.1	63.4
0-60	1896	65.4	98.3
0-90	1929	66.5	100.0
90-180	0	0	0
0-180	1929	66.5	100.0