

FEATURES & SPECIFICATIONS

INTENDED USE

T5 linear direct fluorescent intended for use in low-profile commercial, retail, manufacturing, warehouse, cove and display applications.

ATTRIBUTES

Designed exclusively for use with T5 lamps, T5 sockets and T5 electronic ballasts.

CONSTRUCTION

Housing formed from cold-rolled steel. No asbestos is used in this product. Heavy-duty 20-gauge channel.

Extended-height end caps retain and support sockets. Compact T5 socket features rotating collar and enclosed contacts.

FINISH

High-gloss, baked white enamel finish. Five-stage iron-phosphate pretreatment ensures superior paint adhesion and rust resistance.

OPTICAL SYSTEM

A variety of optical assemblies are available. See the MS5-Reflector or MS5-Louver spec sheets.

ELECTRICAL SYSTEM

Thermally protected, resetting, Class P, HPF, non-PCB, UL Listed.

Suitable for damp locations. AWM, TFN or THHN wire used throughout, rated for required temperatures.

INSTALLATION

Labor-saving coupler supplied for row mounting. Numerous knockouts for easy installation. Surface-mount or suspended.

LISTING

UL Listed and CSA Certified (see Options).

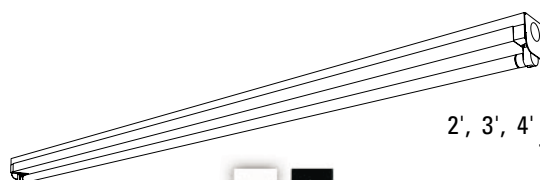
WARRANTY

Guaranteed for one year against mechanical defects in manufacture.

Specifications subject to change without notice.

Low-Profile T5 Direct Channel

MS5



T5
Technology

2', 3', 4' or 8' Lengths
1 or 2 Lamps

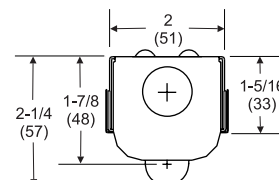
Specifications

Length: 22-7/16 (569), 34-1/4 (869),
46-1/16 (1169) or 92-1/16 (2337)

Width: 2 (51)

Depth: 2-1/4 (57)

Weight: 4.8 lbs (2.2 kg)



ORDERING INFORMATION

Example: **MS5 1 54T5H0 MVOLT GEB10PS**

MS5					
Series	Number of lamps	Lamp type	Voltage	Options	
MS5 T5 low-profile direct	1, 2 Not included.	14T5 14W T5 (22") 21T5 21W T5 (34") 24T5H0 24W T5 H0 (22") 28T5 28W T5 (46") 39T5H0 39W T5 H0 (34") 54T5H0 54W T5 H0 (46")	347², MVOLT³ Others available.	GEB10PS Electronic ballast, ≤10% THD, Program Start	
For tandem double-length unit, add prefix T . ¹ Example: TMS5				GLR Internal fast-blow fuse ⁴	
				GMF Internal slow-blow fuse ⁴	
				PLF Plug-in wiring, specify 1, 2 or 3 branch circuits and hot wires (A=black, B=red, C=blue, AB or AC)	
				EL55 Emergency battery pack (nominal 390-700 lumens; see Fluorescent Battery Packs tab) ^{1, 4}	
				CSA CSA Certified	

Accessories

Order as separate catalog number.

WGMS5Z	Wireguard, 4', zinc
THMS5	Tong hanger
1B	Ceiling spacer (adjusts from 1-1/2" to 2-1/2" from ceiling)
SQ	Swivel stem hanger (specify length in 2" increments)

NOTES:

- 1 Only available with 28W and 54W.
- 2 Only available with 54W.
- 3 Available with GEB10PS only.
- 4 Specify voltage.

MS5 T5 Direct, Low Profile

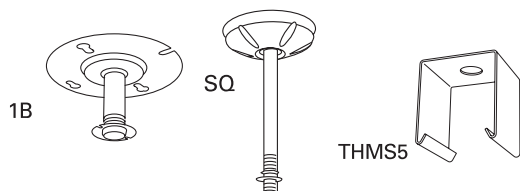
MOUNTING DATA

For unit or row installation, surface or stem mounting.

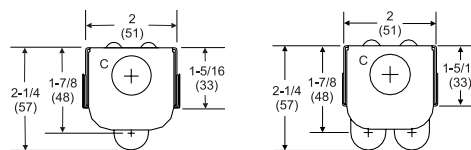
Unit installation — Minimum of two hangers required.

Row installation — One hanger per channel plus one per row required.

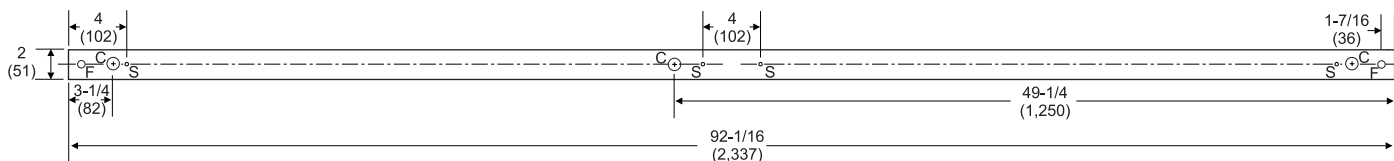
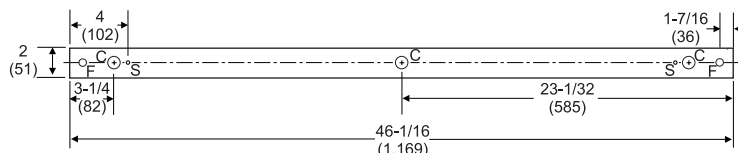
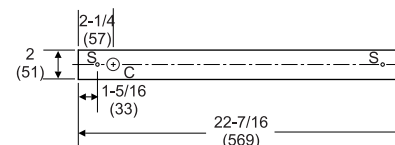
Hanging devices illustrated below.



DIMENSIONS



C = 7/8 (22) Dia. K.O.
F = 7/16 (11) Dia. K.O.
S = 1/4 (6) Dia. K.O.



PHOTOMETRICS

Calculated using the zonal cavity method in accordance with IESNA LM41 procedure. Floor reflectances are 20%. Lamp configurations shown are typical. All data based on 25°C. Full photometric data on these and other configurations available upon request.

MS5 1 54T5HO 120 GEB10PS

Report LTL 8568

Lumens per lamp - 4400 – Lum. eff. - 98.6%

S/MH (along) 1.2 (across) 1.6

Coefficient of Utilization

Ceiling	80%			70%			50%		
	70%	50%	30%	70%	50%	30%	50%	30%	10%
0	113	113	113	109	109	109	100	100	100
1	99	93	87	95	89	84	81	77	73
2	89	79	71	84	75	68	69	63	57
3	80	68	58	76	65	56	59	52	46
4	73	59	50	69	57	48	52	44	38
5	66	52	43	63	50	41	46	38	32
6	61	47	37	58	45	36	41	34	28
7	56	42	33	53	40	32	37	30	24
8	52	38	29	50	37	28	34	27	21
9	49	35	26	46	34	26	31	24	19
10	45	32	24	43	31	23	29	22	17

Zonal Lumens Summary

Zone	Lumens	%Lamp	%Fixture
0-30	640	14.5	14.8
0-40	1089	24.7	25.1
0-60	2159	49.1	49.8
0-90	3583	81.4	82.6
90-180	755	17.2	17.4
0-180	4338	98.6	100.0