

FEATURES & SPECIFICATIONS

INTENDED USE

General illumination for rough service (vandal resistant - industrial applications). Designed for use in corridors, entryways, meeting rooms, classrooms, locker rooms and more. **Certain airborne contaminants can diminish integrity of acrylic. See Acrylic Environmental Compatibility table for suitable uses.**

ATTRIBUTES

All metal parts are post painted in white polyester powder coat for smooth finished edges and corrosion resistance.

CONSTRUCTION

Housing is one-piece, 16-gauge cold-rolled steel. Die formed and welded together with reinforcing members for strength.

OPTICAL

Lenses are UV stabilized extruded polycarbonate A12 prismatic pattern with internal linear side prisms. .130" thick standard. Secured to housing with stainless steel Torx® T-20 tamper-resistant screws. (included)

ELECTRICAL SYSTEM

Ballast and lamp holders are secured to channel cover to provide easy installation and service. Lamp holders are medium bi-pin highly resistant, with internal locking collar for positive lamp retention and resistance to impact and vibration. T8 Ballast are electronic with 0°F starting temperatures.

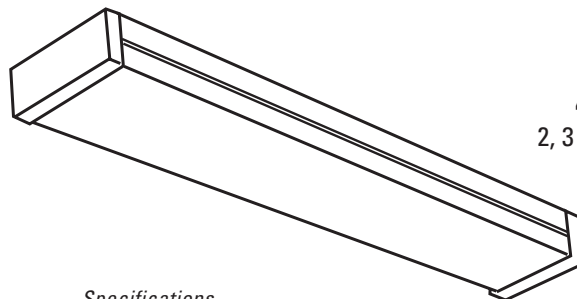
LISTING

UL listed (standard). CSA Certified (see Options). UL listed for 25°C ambient and damp locations.

NOTE: Specifications subject to change without notice.

Rough Service Wraparound

VW



4' LENGTH
2, 3 or 4 lamps

Specifications

Depth:	3-1/4 (8.3) 2 & 4 lamp 5 (12.7) 3 lamp
Width:	3-1/4 (33.7) 4 lamp 8-1/2 (21.3) 2 & 3 lamp
Length:	49 (124.5)

All dimensions are inches (centimeters) unless otherwise specified.

ORDERING INFORMATION

For shortest lead times, configure product using **standard options (shown in bold)**.

Example: VW 2 32 120 GEB EL6DW

Series	Lamps	Wattage	Lens	Voltage	Options
VW 2 or 3 lamps in 8-3/8" housing or 4 lamps in 13-1/4" housing	2 3 4 Not included.	32 32W T8 (48")	(blank) Polycarbonate lens, .130" thick ACR High-impact acrylic lens, 50% DR, .130" thick PCL156 Polycarbonate lens, .156" thick	120 277 347 MVOLT¹	EL Emergency lighting (300 lumens) ² EL5DW Emergency lighting (500 lumens) ² EL6DW Emergency lighting (600 lumens) ² EL14DW Emergency lighting (1400 lumens) ² GEB Electronic ballast, ≤20% THD GEB10IS Electronic ballast, ≤10% THD, instant start GEB10RS Electronic ballast, ≤10% THD, rapid start ³ GLR Internal fast-blow fusing GMF Internal slow-blow fusing CSA Listed and labeled to comply with Canadian Standards NOM Listed and labeled to comply with Mexican Standards
2VW 2 lamps in 13-1/4" housing					

NOTES:

- Available with electronic lamps and ballasts only
- Luminaires ordered with **DW** option (Example **EL5DW**) will bear the UL Emergency Lighting Equipment label for damp or wet locations, depending on the fixture
- Not available with MVOLT.

Accessories:

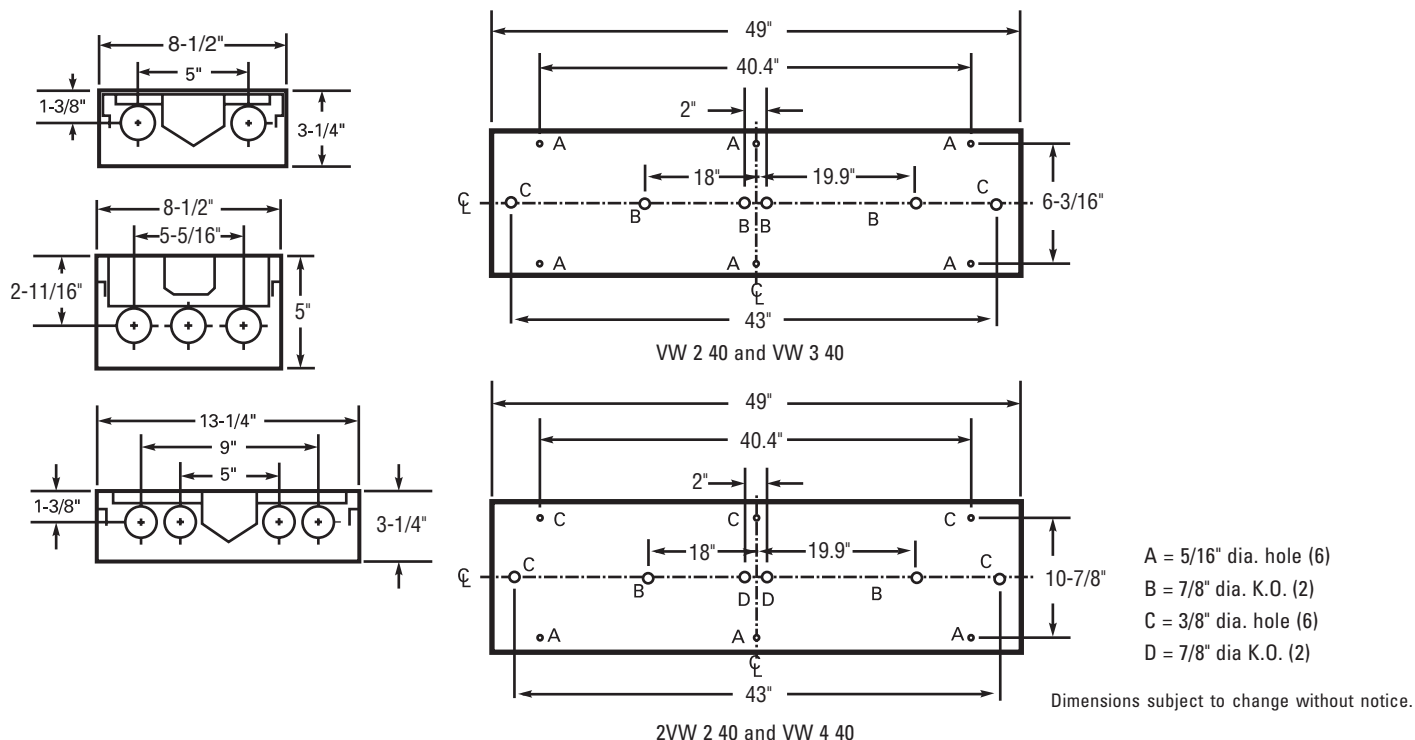
Order as separate catalog number.

- RK1 T20BIT Hex-base driver bit, Torx TX20, for tamper-resistant screws with center reject pin.
- RK1 T20DRV Torx TX20 screwdriver for use with tamper-resistant screws with center reject pin.

VW 4' Length

MOUNTING DATA

Six mounting holes provided in housing back. Use fasteners suitable for ceiling material. Wet location listing requires fixture to be surface-mounted to ceiling. Caulk around all mounting points to maintain wet location integrity.



PHOTOMETRICS

Are calculated using the zonal cavity method in accordance with IESNA LM41 procedure. Full photometric data available upon request.

VW 2 32 2 lamp, 2850 rated lumens, test no. LTL7484R

Coefficient of utilization									Distribution data		
r f	80%				20%				Angle	cp.	Lumens
r c	70%	50%	30%	10%	50%	30%	10%				
r w	70%	50%	30%	10%	50%	30%	10%				
0	72	72	72	72	66	66	66	0°	1251	0	
1	66	63	60	58	58	56	54	5°	1249	119	
2	60	55	52	48	51	48	46	15°	1234	350	
3	55	49	44	41	46	42	39	25°	1187	550	
4	51	44	39	35	41	37	34	35°	1070	672	
5	47	39	34	30	37	32	29	45°	813	630	
6	43	36	30	27	33	29	26	55°	486	436	
7	40	32	27	24	30	26	23	65°	255	253	
8	37	29	24	21	28	23	20	75°	145	153	
9	35	27	22	19	26	21	18	85°	102	112	
10	33	25	20	17	24	20	17	90°	86	0	
								95°	84	92	
								105°	67	71	
								115°	37	37	
								125°	22	20	
								135°	9	7	
								145°	9	5	
								155°	8	4	
								165°	6	2	
								175°	4	0	
								180°	4	0	

Output data		
Zone	Lumens	%lamp
0°- 30°	1018	17.9
0°- 40°	1691	29.7
0°- 60°	2756	48.4
0°- 90°	3274	57.4
90°- 180°	237	4.2
0°- 180°	3512	*61.6

* Fixture efficiency

Spacing criterion: 1.2
Spacing to mounting height: 1.2

VW 4 32 4 lamp, 2850 rated lumens, test no. LTL7488

Coefficient of utilization									Distribution data		
r f	80%				20%				Angle	cp.	Lumens
r c	70%	50%	30%	10%	50%	30%	10%				
r w	70%	50%	30%	10%	50%	30%	10%				
0	71	71	71	71	66	66	66	0°	2671	0	
1	66	63	61	58	58	56	55	5°	2666	254	
2	60	56	52	49	52	49	46	15°	2623	743	
3	55	50	45	41	46	43	40	25°	2518	1165	
4	51	44	39	36	42	38	34	35°	2291	1439	
5	47	40	35	31	38	33	30	45°	1637	1268	
6	44	36	31	27	34	30	27	55°	932	836	
7	41	33	28	24	31	27	24	65°	446	443	
8	38	30	25	22	28	24	21	75°	269	285	
9	35	28	23	20	26	22	19	85°	154	167	
10	33	25	21	18	24	20	17	90°	100	0	
								95°	111	121	
								105°	105	111	
								115°	58	58	
								125°	37	33	
								135°	27	21	
								145°	8	5	
								155°	8	4	
								165°	6	2	
								175°	3	0	
								180°	4	0	

Output data		
Zone	Lumens	%lamp
0°- 30°	2163	19.0
0°- 40°	3603	31.6
0°- 60°	5707	50.1
0°- 90°	6602	57.9
90°- 180°	354	3.1
0°- 180°	6956	*61.0

* Fixture efficiency

Spacing criterion: 1.2
Spacing to mounting height: 1.2

FEATURES & SPECIFICATIONS

INTENDED USE

General illumination for rough service (vandal resistant - industrial applications). Designed for use in corridors, entryways, meeting rooms, classrooms, locker rooms and more. **Certain airborne contaminants can diminish integrity of acrylic. See Acrylic Environmental Compatibility table for suitable uses.**

ATTRIBUTES

All metal parts are post painted in white polyester powder coat for smooth finished edges and corrosion resistance.

CONSTRUCTION

Housing is one-piece, 16-gauge cold-rolled steel. Die formed and welded together with reinforcing members for strength.

OPTICAL

Lenses are UV stabilized extruded polycarbonate A12 prismatic pattern with internal linear side prisms. .130" thick standard. Secured to housing with stainless steel Torx® T-20 tamper-resistant screws. (included)

ELECTRICAL SYSTEM

Ballast and lamp holders are secured to channel cover to provide easy installation and service. Lamp holders are medium bi-pin highly resistant, with internal locking collar for positive lamp retention and resistance to impact and vibration. T8 Ballast are electronic with 0°F starting temperatures.

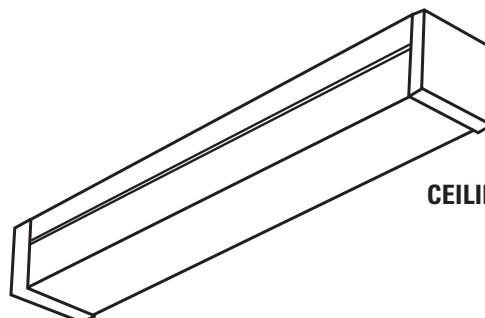
LISTING

UL listed (standard). CSA Certified (see Options). UL listed for 25°C ambient and damp locations.

NOTE: Specifications subject to change without notice.

Rough Service Wraparound

VWC



CEILING/ WALL MOUNTED

2' or 4' length
1 or 2 lamps

Specifications

Depth: 5-1/4
Width: 4-1/2
Length: 49 (124.5)

All dimensions are inches (centimeters) unless otherwise specified.

ORDERING INFORMATION

For shortest lead times, configure product using **standard options (shown in bold)**.

Example: VWC 2 20 AR 120 GLR

VWC							
Series	Lamp	Wattage		Lens	Voltage	Options	
VWC	1	17	17W T8 (24") ¹	(Blank)	120	EL	Emergency battery pack (nominal 300 lumens) ³
	2	32	32W T8 (48")	ACR	277	EL5DW	Emergency battery pack (nominal 500 lumens) ³
	Not included.			PCL156	347	EL6DW	Emergency battery pack (nominal 600 lumens) ³
					MVOLT²	EL14DW	Emergency battery pack (nominal 1400 lumens) ³
						GEB	Electronic ballast, ≤20% THD
						GEB10IS	Electronic ballast, ≤10% THD, instant start
						GEB10RS	Electronic ballast, ≤10% THD, rapid start ⁴
						GLR	Internal fast-blow fusing
						GMF	Internal slow-blow fusing
						CSA	Listed and labeled to comply with Canadian Standards
						NOM	Listed and labeled to comply with Mexican Standards

NOTES:

- Available with electronic lamps and ballasts only
- Must specify **TUBIHP** when using this voltage
- Luminaires ordered with **DW** option (Example **EL5DW**) will bear the UL Emergency Lighting Equipment label for damp or wet locations, depending on the fixture
- Not available with MVOLT.

Accessories:

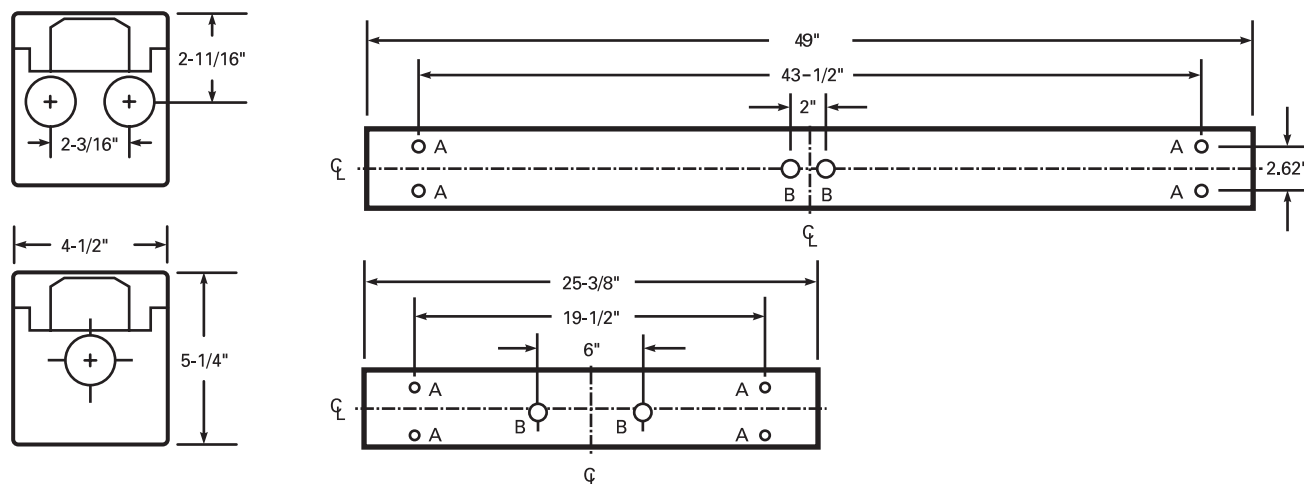
Order as separate catalog number.

- RK1 T20BIT Hex-base driver bit, Torx TX20, for tamper-resistant screws with center reject pin.
- RK1 T20DRV Torx TX20 screwdriver for use with tamper-resistant screws with center reject pin.

VWC 2' or 4' Length

MOUNTING DATA

Four mounting holes provided in housing back. Use fasteners suitable for ceiling material.



A = 5/16" dia. hole (4)

B = 7/8" dia. K.O. (2)

Dimensions subject to change without notice.

PHOTOMETRICS

Are calculated using the zonal cavity method in accordance with IESNA LM41 procedure. Full photometric data available upon request.

VWC 2 32 2 lamp, 2850 rated lumens, test no. LTL7483

Coefficient of utilization									Distribution data		
r f									Angle	cp.	Lumens
r c									0°	971	0
r w	70%	80%	50%	30%	10%	50%	30%	10%	5°	978	93
0	82	82	82	82	72	72	72		15°	997	283
1	73	69	66	63	61	58	56		25°	980	453
2	66	60	55	50	53	49	45		35°	856	538
3	60	52	46	41	46	41	38		45°	683	529
4	55	46	40	35	41	36	32		55°	548	492
5	50	41	34	30	36	31	27		65°	401	398
6	46	37	30	26	33	28	24		75°	297	314
7	43	33	27	22	30	25	21		85°	228	248
8	40	30	24	20	27	22	19		90°	206	0
9	37	28	22	18	25	20	17		95°	195	212
10	35	25	20	16	23	18	15		105°	175	185
									115°	148	146
									125°	115	103
									135°	82	63
									145°	51	32
									155°	25	12
									165°	10	3
									175°	3	0
									180°	1	0
Output data											
Zone	Lumens		%lamp								
0°- 30°	829		14.6								
0°- 40°	1367		24.0								
0°- 60°	2388		41.9								
0°- 90°	3348		58.7								
90°- 180°	757		13.3								
0°- 180°	4105		*72.0								
Spacing criterion: 1.2											

Spacing criterion: 1.2

Spacing to mounting height: 1.2

VWC 2 17 2 lamp, 1325 rated lumens, test no. LTL7486

Coefficient of utilization										Distribution data		
r f										Angle	cp.	Lumens
r c	70%	80%	50%	30%	10%	50%	30%	10%		0°	431	0
r w										5°	435	41
0	75	75	75	75	66	66	66			15°	438	124
1	67	64	60	57	56	54	51			25°	427	198
2	61	55	50	46	48	45	42			35°	368	231
3	55	48	42	38	42	38	35			45°	290	225
4	50	42	36	32	38	33	29			55°	233	209
5	46	38	32	27	34	29	25			65°	168	167
6	43	34	28	24	30	25	22			75°	125	132
7	39	31	25	21	27	23	19			85°	93	101
8	37	28	22	18	25	20	17			90°	83	0
9	34	25	20	16	23	19	15			95°	81	88
10	32	23	18	15	21	17	14			105°	74	78
										115°	63	62
										125°	49	44
										135°	34	26
										145°	21	13
										155°	10	5
										165°	3	1
										175°	0	0
										180°	1	0

Spacing criterion: 1.2

Spacing to mounting height: 1.2

Certain chemicals that may exist in end-user locations release airborne contaminants that can impact the integrity and safety of key fixture components that contain acrylic material. Immediate damage may occur such as crazing, cracking, permeation losses and mechanical failure. Products with visually noticeable deterioration have diminished integrity and must be replaced immediately with a more suitable product for the application.

This table identifies the most common chemicals and is not intended to be all-inclusive. Exposure to compounds identified as "Not Acceptable" will void all warranties associated with the product. Acrylic components should not be used in areas where these chemicals are used and where these

Acrylic Compatibility

chemicals become mists or airborne vapors. Ensure that chemical interactions are considered when selecting fixtures. For additional information please consult an authorized factory representative.

NOT ACCEPTABLE			ACCEPTABLE	
Acetaldehyde, 100%	Dibutyl Sebacate	Petroleum Ether (100-120C)	2-Ethylhexyl Sebacate	Nitrogen Monoxide Gas
Acetates	Diethyl Ether	Phenois	Acetic Acid 5%	Olefric Carboic Acids
Acetic Acid, Glacial, 100%	Dimethyl Formamide	Phenol, Aqueous, 5%	Ammonia-based Cleaners	Oleic Acid
Acetic Anhydride	Dioctyl Sebacate	Phosphoric Acid, 95% @ 20C	Ammonia Gas	Olive Oil
Acetone	Dioxane	Phthalates	Ammonium Hydroxide, 28%	Oxalic Acid, 100%
Acetonitrile	Ether	Pyridine	Ammonium Nitrate	Oxygen Gas
Acetophenone	Ethyl Acetate	Sodium Carbonate, 2%	Ammonium Phosphate	Ozone Gas
Acrylic Paints	Ethyl Alcohol, Concentrated	Sodium Carbonate, 20%	Aniseed, Bay Leaves, Nutmeg	Paraffin, Medicinal
Alcohol, Allyl	Ethyl Bromide	Sodium Phosphate	Anti-freeze	Pepper, Cinnamon, Onions
Alcohol, Amyl	Ethyl Butyrate	Sulfur Dioxide, Liquid	Beer	Phosphoric Acid, 10% @ 20C
Alcohol, Benzyl	Ethylene Bromide	Sulfuric Acid, 98%	Bleaching Power Paste	Photographic Baths
Alcohol, Ethyl, 100%	Ethylene Dibromide	Sulfurous Acid, Concentrated	Bleaching Powder Solution, 2%	Polishing Compounds
Alcohol, Ethyl, 50%	Ethylene Oxide (Moist)	Tincture of Iodine, 5%	Calcium Hypochlorite	Potassium Chlorate
Alcohol, Isopropyl, 100%	Glass Cleaners	Toluene	Car Wash Detergent	Potassium Cyanide
Alcohol, Methyl, 10%	Glycol	Transformer Oil	Carbon Dioxide Gas	Potassium Dichromate, 10%
Alcohol, Methyl, 100%	Hydrogen Peroxide, 28%	Trichloroethane	Carbon Monoxide Gas	Potassium Hydroxide @ 20C
Alcohol, Methyl, 50%	Hydrogen Peroxide, 3%	Trichloroethylene	Caustic Potash	Potassium Permanganate
Alcohol, N-Butyl	Iron Perchloride	Turpentine	Chlorine Based Cleaners	Potassium Sulfite
Amyl Acetate	Isocane	Unleaded Gasoline	Chlorine, Aqueous, 2%	Power Steering Fluid
Aniline	Isopropyl Alcohol	Vegetable Oil	Citric Acid, 10%	Propylene
Aviation Fuel (100 Octane)	Lacquer Thinner	Xylene	Coffee	Pure-oil Paints
Benzaldehyde	Lactic Acid Butyl Ester		Cooking Oil	Silicone Oil
Benzene	Mercury Chloride		Cottonseed Oil	Silver Nitrate
Benzoic Aldehyde	Meta-Cresol		Diethylene Glycol	Soap Suds
Brake Fluid	Methanol, 15%		Epoxy Adhesives	Soda
Bromine Gas	Methanol, Concentrated		Ethyl Alcohol, 15%	Sodium Chloride, 10%
Butanol	Methyl Benzoate		Ethylene Glycol E	Sodium Cyanide
Butraldehyde	Methyl Chloride		Ethylene Oxide (Dry)	Sodium Fluoride
Butyl Acetyl Ricinoleate	Methyl Cyclohexanol		Ferric Chloride, Aqueous, 10%	Sodium Hydroxide, 60%
Butyl Stearate	Methyl Ethyl Ketone		Formaldehyde, Aqueous, 40%	Sodium Nitrate
Carboic Acid	Methyl Naphthalene		Fruit Juice	Sodium Thiosulphate, 40%
Carbon Disul de	Methyl Salicylate		Glycerol	Stearic Acid
Carbon Disulfide	Methylamine		Heptane	Sulfur Dioxide, Dry Gas
Cellulose Paints	Methylene Dichloride		Hexane	Sulfuric Acid, 30%
Chlorinated Hydrocarbons	Mineral Oil		Hydrochloric Acid, 38%	Sulfurous Acid, 5%
Chlorinated Solvents	Motor Fuel Mixture, with Benzene		Kerosene	Tararic Acid, 50%
Chlorine Gas	Nail Polish		Lactic Acid	Transmission Fluid
Chlorophenol	Naphtha		Metal Carbonates	Tricresyl Phosphate
Chromic Acid, 40%	N-Butyric Acid, 100%		Metal Chlorides	Triethyl Amine
Cloves	Nitric Acid, 40%		Metal Sulfates	Vinegar
Cosmoline Removers	Nitric Acid, 70%		Methane Gas	Water, Mineral Water
Cresol	Nitrobenzene		Milk	Wax Polish
Cyclohexane	N-Octane		Milk, Chocolate	White Spirit
Cyclohexanone	Organic Solvents		Motor Fuel Mixture, without Benzene	Whitewash
Cyclohexene	Paint Removers		Motor Oil	Wine
Detergent Solution	Paint Thinner		Natural Gas	
Diacetone Alcohol	Perchlorethylene		Nitric Acid, 10%	
Diamyl Phthalate			Nitrogen Dioxide Gas	

The statements, technical information and recommendations obtained herein are believed to be accurate as of June 1, 2009. Since the conditions and methods of use of the product and of the information referred to herein are beyond our control, Acuity Brands Lighting expressly disclaims any and all liability. NO WARRANTY OF FITNESS FOR ANY PARTICULAR PURPOSE, WARRANTY OF MERCHANTABILITY OR ANY OTHER WARRANTY, EXPRESS OR IMPLIED, IS MADE CONCERNING THE GOODS DESCRIBED OR THE INFORMATION PROVIDED HEREIN. The user should thoroughly test any application before commercialization.