

Adaptors, Enlargers, Reducers

- Can be used in
 - Zone 1 and Zone 2
 - Zone 21 and Zone 22
- Degree of Protection IP 66
- Numerous Versions
 - Enlargements
 - Reducers
 - Adaptors



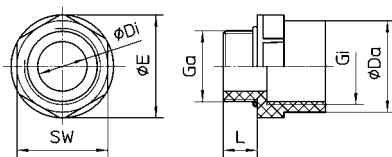
Form B



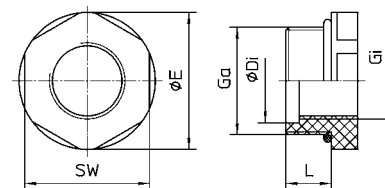
Form A

Technical Data:

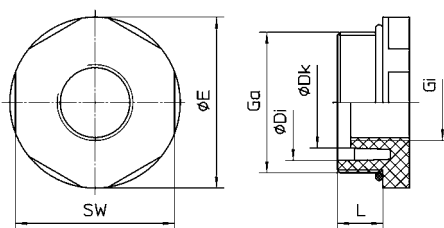
Explosion Protection: II 2 G/D EEx e II IP66
 Certificates: PTB 04 ATEX 1040 X
 Material: Polyamide
 Degree of Protection: IP 66
 Temperature Range: -20°C ... +70°C



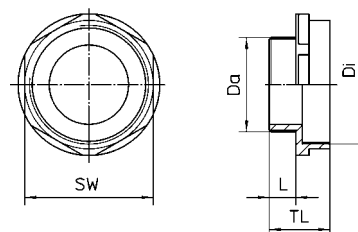
Form A



Form B



Form C



Enlargement : Metric - Metric

To learn more about B-I-A please visit us at our
 WEB site: www.BiaGmbH.com



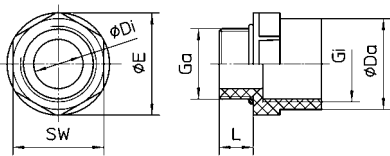
Selection table

Version	Dimensions [mm]					Catalog No.	Weight
	Da	Di	L	SW	TL		
Enlargements Metric - Metric	M 16	M 20	9	24	27	4646610	0,013
	M 20	M 25	9	29	27	4646600	0,015
	M 25	M 32	10	36	28	4646590	0,018
	M 32	M 40	12	46	30	4646580	0,023
	M 40	M 50	12	55	30	4646570	0,031
	M 50	M 63	14	68	32	4646560	0,044

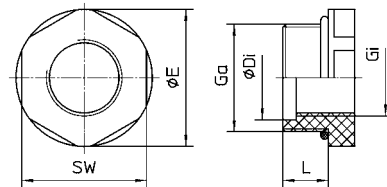


Selection table

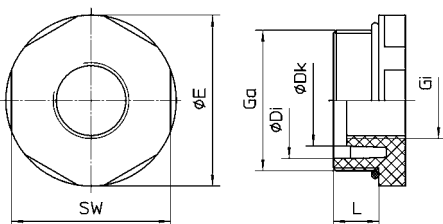
Version	Dimensions [mm]							Catalog No.	Weight
	Ga	Gi	L	SW	Di	E	Type		
Reducers Metric - Metric	M20	M16	9	24	14	9	Form A	4646550	0,015
	M25	M20	10	29	19	32	Form B	4646540	0,011
	M32	M20	12	36	26	40	Form B	4646530	0,016
	M32	M25	12	36	26	40	Form B	4646520	0,013
	M40	M20	12	45	32	51	Form C	4646510	0,020
	M40	M25	12	45	32	51	Form C	4646500	0,018
	M40	M32	12	45	32	51	Form B	4646490	0,016
	M50	M20	14	55	42	61	Form C	4646480	0,028
	M50	M25	14	55	42	61	Form C	4646470	0,026
	M50	M32	14	55	42	61	Form C	4646460	0,023
	M50	M40	14	55	42	61	Form B	4646450	0,015
	M63	M20	15	68	55	75	Form C	4646440	0,050
	M63	M25	15	68	55	75	Form C	4646430	0,048
	M63	M32	15	68	55	75	Form C	4646420	0,046
	M63	M40	15	68	55	75	Form C	4646410	0,041
M63	M50	15	68	55	75	Form B	4646400	0,035	



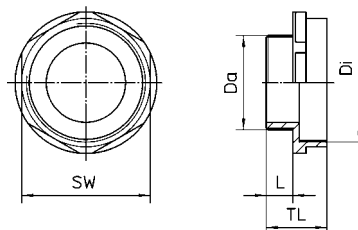
Form A



Form B





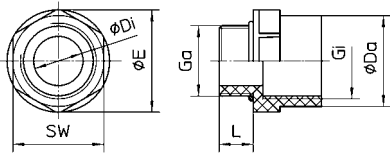
Form C



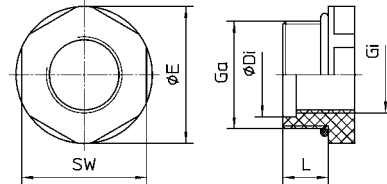
Enlargement : Metric - Metric

Selection table

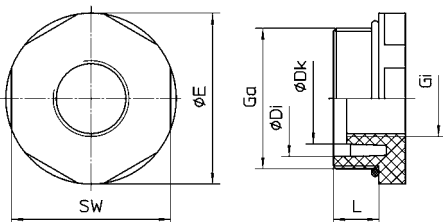
Version	Dimensions [mm]							Catalog No.	Weight
	Ga	Gi	L	SW	Di	E	Type		
Adaptor Pg - Metric 	Pg 11	M 20	9	24	13	27	Form A	4646780	0,017
	Pg 13,5	M 20	10	24	14	27	Form A	4646770	0,014
	Pg 13,5	M 25	10	29	14	32	Form A	4646760	0,021
	Pg 16	M 20	10	27	17	29	Form A	4646750	0,011
	Pg 36	M 50	14	55	40.5	61	Form A	4646620	0,018
	Pg 21	M 40	12	46	22	51	Form A	4646710	0,013
	Pg 21	M 32	12	36	22	40	Form A	4646720	0,021
	Pg 21	M 25	12	33	22	36	Form A	4646730	0,014
	Pg 29	M 40	12	46	30.5	51	Form A	4646670	0,015
Adaptor Pg - Metric 	Pg 36	M 40	14	53	40.5	59	Form B	4646630	0,017
	Pg 29	M 32	12	42	30.5	45	Form B	4646680	0,072
	Pg 21	M 20	12	33	22	36	Form B	4646740	0,010
	Pg 29	M 20	12	42	30.5	45	Form C	4646700	0,024
	Pg 29	M 25	12	42	30.5	45	Form C	4646690	0,015
	Pg 36	M 20	14	53	40.5	59	Form C	4646660	0,039
	Pg 36	M 25	14	53	40.5	59	Form C	4646650	0,025
Pg 36	M 32	14	53	40.5	59	Form C	4646640	0,033	



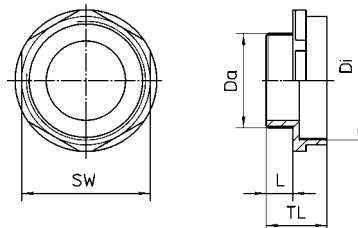
Form A



Form B



Form C



Enlargement : Metric - Metric