

FLUSH STEEL BOXES

BS 4662 WHERE APPLICABLE		PACK QTY
PLASTER DEPTH 16mm		
SB621	1 gang fixed lugs, with knockouts for grommet entry	100
SB623	1 gang adjustable lug, with smooth cable entry hole and knockouts	100
SB633	2 gang adjustable lug, with knockouts for grommet entry	50
SB605	PVC grommet for SB621 , SB623 and SB633 boxes	100

For moulded and metal plate 1 and 2 gang switches.

Dimensions	1 gang 70mm x 70mm x 16mm 2 gang 130mm x 70mm x 16mm
-------------------	---

INTERMEDIATE DEPTH 25mm

SB656	1 gang fixed lugs, with 12 x 20mm knockouts	100
SB655	1 gang adjustable lugs, with 12 x 20mm knockouts	100
SB666	2 gang fixed lugs, with 16 x 20mm knockouts	50
SB665	2 gang adjustable lug, with 16 x 20mm knockouts	50
SB676	Dual box, fixed lugs, for two 1 gang size accessories with 16 x 20mm knockouts	5
9257/BG	28mm deep 1 gang architrave adjustable lug, with 20mm knockouts	10
9258/BG	28mm deep 2 gang architrave adjustable lug, with 20mm knockouts	10

For 1 and 2 gang size wiring accessories. Dual box is suitable for horizontal or vertical mounting and separating screen can be easily removed if not required.

Dimensions	1 gang 68.3mm x 68.3mm x 25mm 2 gang 129mm x 68.3mm x 25mm Dual box 154mm x 68.3mm x 25mm
-------------------	---

STANDARD DEPTH 35mm

SB616	1 gang fixed lugs, with 12 x 20mm knockouts	100
SB615	1 gang adjustable lugs, with 12 x 20mm knockouts	100
SB626	2 gang fixed lugs, with 12 x 20mm knockouts	50
SB625	2 gang adjustable lug, with 16 x 20mm knockouts	50
SB636	Dual box, fixed lugs, for two 1 gang size accessories with 16 x 20mm knockouts	5

For 1 and 2 gang size wiring accessories. Dual box is suitable for horizontal or vertical mounting and separating screen can be easily removed if not required.

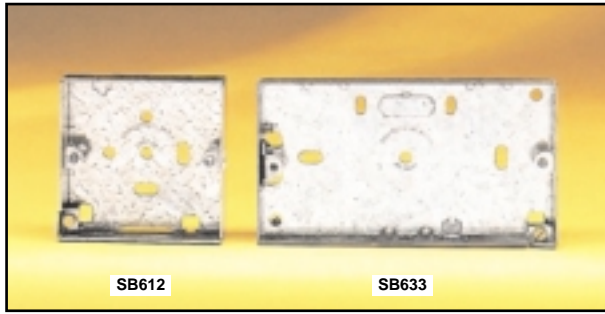
Dimensions	1 gang 68.3mm x 68.3mm x 35mm 2 gang 129mm x 68.3mm x 35mm Dual box 154mm x 68.3mm x 35mm
-------------------	---

EXTRA DEPTH 47mm

SB618	1 gang fixed lugs, with 10 x 20mm and 1 x 25mm knockouts	5
SB628	2 gang adjustable lug, with 8 x 20mm and 4 x 20/25mm knockouts	4
9338/GV	43mm deep for 45A cooker control units, with 20mm and 25mm knockouts	1
9224/BG	65mm deep for 32A TP & N switches, with 20mm knockouts	1

SB618 and SB628 suitable for 1 and 2 gang size wiring accessories.

Dimensions	1 gang 68.3mm x 68.3mm x 47mm 2 gang 129mm x 68.3mm x 47mm 9338/GV box 155mm x 101mm x 43mm 9224/BG box 118mm x 168mm x 65mm
-------------------	---



FLUSH STEEL MINERAL INSULATED BOXES

MI boxes have universal entries and **SB670** clamps can be attached as required.

BS 4662 WHERE APPLICABLE PACK QTY

PLASTER DEPTH 16mm

SB612	1 gang fixed lugs.	100
SB633	2 gang adjustable lug.	50
SB641	16mm deep x 50.8 dia. terminal pattern circular junction box M4 lugs 50.8mm centers. Supplied with electro galvanized clamps.	20
SB642	16mm deep x 50.8 dia. through pattern circular junction box M4 lugs 50.8mm centers. Supplied with electro galvanized clamps.	20

SB612 and SB633 for moulded and metal plate 1 and 2 gang size switches.

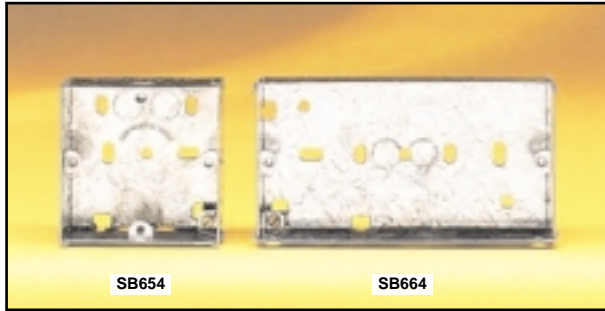
Dimensions
 1 gang 70mm x 70mm x 16mm
 2 gang 130mm x 70mm x 16mm

INTERMEDIATE DEPTH 25mm

SB654	1 gang fixed lugs.	100
SB664	2 gang fixed lugs.	50
SB643	25mm deep x 60.3 dia. standard surface or flush BS looping box M4 lugs 50.8mm centers. Suitable for one or two SB670 clamps.	10

For 1 and 2 gang size wiring accessories.

Dimensions
 1 gang 68.3mm x 68.3mm x 25mm
 2 gang 129mm x 68.3mm x 25mm

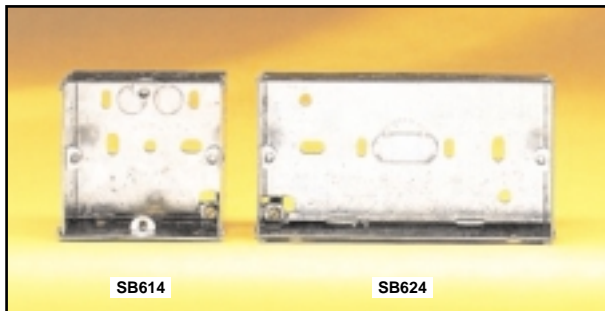


STANDARD DEPTH 35mm

SB614	1 gang fixed lugs.	100
SB624	2 gang fixed lugs.	50

For 1 and 2 gang size wiring accessories.

Dimensions
 1 gang 68.3mm x 68.3mm x 35mm
 2 gang 129mm x 68.3mm x 35mm



MINERAL INSULATED CLAMP

- Allow either single or twin MI Pots to be held prior to termination.
- Boxes are universal entry and clamps can be attached as required.
- Complete with screws for clamping either one or two MI cables and screws for attachment to box.
- Electro galvanized.

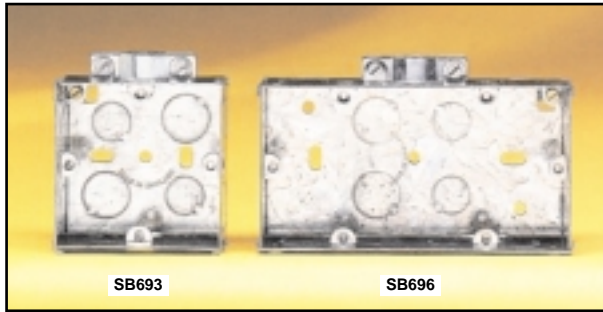
SB670	MI Clamp Suitable for boxes SB612, SB614, SB624, SB633, SB643, SB644, SB654, SB664	50
--------------	--	----



BS LOOPING AND JUNCTION BOXES

SB641	16mm deep x 50.8 dia terminal pattern circular junction box	20
SB642	16mm deep x 50.8 dia through pattern circular junction box	20
SB643	25mm deep x 60.3 dia standard surface or flush BS looping box	10
SB644	32mm deep x 60.3 dia surface or flush BS looping box M4 lugs 50.8mm centers. Suitable for one or two SB670 clamps.	10
SB650	M4 x 6mm combi pan head earth screws and washers for SB641 and SB642	100





FLUSH STEEL UNIVERSAL CLEAT BOXES

Boxes are complete with external clamps.
Suitable for 16mm or 20mm oval or round PVC / steel conduit.
Suitable for pot seals of MI cables.

BS 4662 WHERE APPLICABLE PACK QTY

INTERMEDIATE DEPTH 25mm

SB693 1 gang fixed lugs. 10

SB696 2 gang with 6 fixed lugs. 5

For 1 and 2 gang size accessories.

Dimensions 1 gang 68.3mm x 68.3mm x 25mm
2 gang 129mm x 68.3mm x 25mm

STANDARD DEPTH 35mm

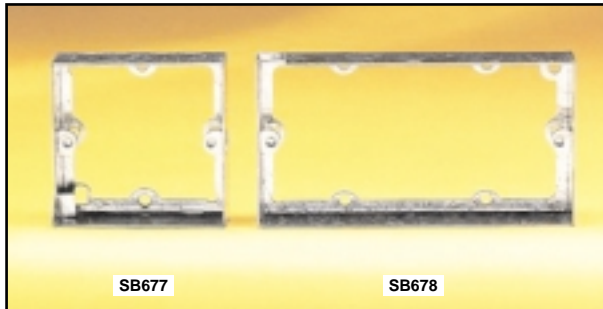
BS 4662 WHERE APPLICABLE PACK QTY

SB687 1 gang fixed lugs. 10

SB690 2 gang with 6 fixed lugs. 5

For 1 and 2 gang size accessories.

Dimensions 1 gang 68.3mm x 68.3mm x 35mm
2 gang 129mm x 68.3mm x 35mm



FLUSH STEEL BOX EXTENSIONS

PACK QTY

SB677 16mm deep 1 gang 20

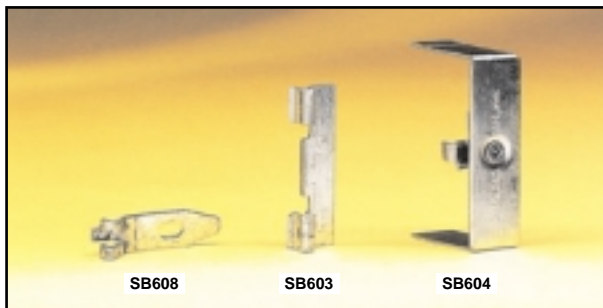
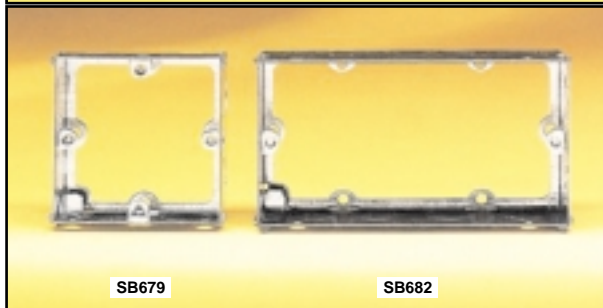
SB678 16mm deep 2 gang 10

SB679 25mm deep 1 gang 10

SB680 25mm deep 2 gang 5

SB681 35mm deep 1 gang 10

SB682 35mm deep 2 gang 5



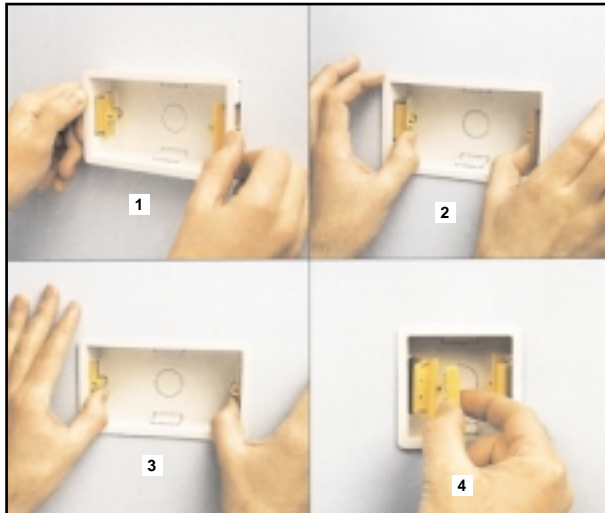
FLUSH STEEL BOX ACCESSORIES

PACK QTY

SB608 Mounting brackets
For securing 25 - 47mm
deep boxes to thin walls 100

SB603 Box fixing flanges
For dry partition walls 100

SB604 Connectors
For coupling 25mm or
35mm fixed lug boxes 50



DRY LINING BOXES

- Large flange around front prevents slipping into cavity and matches profile of accessory front plate.
- Manufactured from flame retardant thermoplastic.
- Tough yellow nylon lugs have large bearing faces for superior strength.
- 2 side knockout cable entries plus one 25mm base knockout.
- Will fit board thickness from 6.35 up to 15mm.
- Brass earth terminal available.

- 1 Back of box can be used as a template to mark wall.
- 2 Box simply pushes into cavity.
- 3 Lugs easily click into position to retain box.
- 4 Lugs clamp on partition when pulled forward.



STANDARD DEPTH 35mm

		PACK QTY
SB619	1 gang	100
SB619BT	1 gang with fitted brass earth terminal	100
SB629	2 gang	50
SB629BT	2 gang with fitted brass earth terminal	50
SB637	Dual box, for two 1 gang size accessories	10
SB637BT	Dual box, for two 1 gang size accessories, with fitted earth terminal	10

For 1 and 2 gang size wiring accessories.

Dimensions	1 gang 86mm x 86mm x 36mm
	2 gang 146mm x 86mm x 36mm
Cout-out Dims.	1 gang 73mm x 73mm
	2 gang 133mm x 73mm



EXTRA DEPTH 47mm

		PACK QTY
SB632	1 gang	4
SB632BT	1 gang with fitted brass earth terminal	4
SB631	2 gang	4
SB631BT	2 gang with fitted brass earth terminal	4

For 1 and 2 gang size wiring accessories.

Dimensions	1 gang 86mm x 86mm x 48mm
	2 gang 146mm x 86mm x 48mm
Cout-out Dims.	1 gang 73mm x 73mm
	2 gang 133mm x 73mm



DRY LINING ACCESSORIES

		PACK QTY
SB/BT	Brass earth terminal	10
SB/LX	Packing piece For fitting to partitions below 6.35mm	20