

TWO-GANG BOXES DIE CAST ALUMINUM

Applications

- For use in branch circuit wiring in wet, damp, or dry locations
- Can be used as a weatherproof junction box, or as a housing for receptacles, switches, and GFCI's

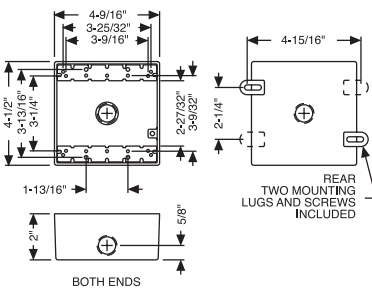
Product Features

- Seamless die cast aluminum construction
- Reinforced connector outlets
- State-of-the-art powder coat finish
- Eight box mounting options with detachable lugs provided
- Two closure plugs included
- Ground screw installed
- Multi-lingual instructions in each package

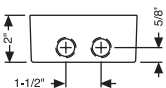
Compliances

- – Standard 514A
- – C22.2 No. 18
- NEMA 3R Rated

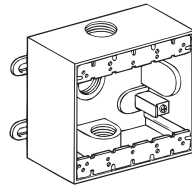
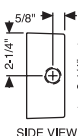
TWO-GANG BOXES GENERAL DIMENSIONS



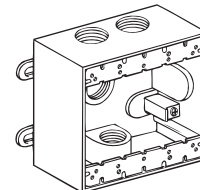
END VIEW FOR STYLES WITH TWO OUTLETS ON ONE END



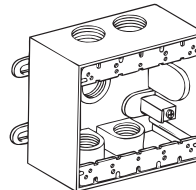
SIDE VIEW 5334-0, 5342-0



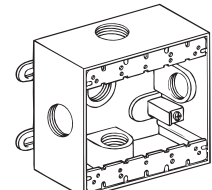
5333-0, 5341-0



5335-0, 5343-0



5337-0 TO 5337-5,
5345-0



5334-0, 5342-0

ORDERING INFORMATION - DIMENSIONS

2" DEEP, WITH LUGS - THREE THREADED OUTLETS - 4-1/2" X 4-9/16"						
CATALOG NUMBER	CUBIC IN.	DESCRIPTION		PKG. TYPE	STD. PKG.	UPC BAR CODE
		COLOR	OUTLETS			
5333-0	30.5	Gray	3-1/2"	Shrink	12	
5341-0	30.5	Gray	3-3/4"	Shrink	12	

2" DEEP, WITH LUGS - FOUR THREADED OUTLETS - 4-1/2" x 4-9/16"						
CATALOG NUMBER	CUBIC IN.	DESCRIPTION		PKG. TYPE	STD. PKG.	UPC BAR CODE
		COLOR	OUTLETS			
5335-0	30.0	Gray	4-1/2"	Shrink	12	
5343-0	30.0	Gray	4-3/4"	Shrink	12	

2" DEEP, WITH LUGS - FIVE THREADED OUTLETS - 4-1/2" x 4-9/16"						
CATALOG NUMBER	CUBIC IN.	DESCRIPTION		PKG. TYPE	STD. PKG.	UPC BAR CODE
		COLOR	OUTLETS			
5337-0	29.0	Gray	5-1/2"	Shrink	12	
5337-1	29.0	White	5-1/2"	Shrink	12	
5337-2	29.0	Bronze	5-1/2"	Shrink	12	
5337-5	29.0	Gray	5-1/2"	Carded	4	
5345-0	29.0	Gray	5-3/4"	Shrink	12	
5334-0	30.5	Gray	5-1/2"	Shrink	12	
5342-0	30.5	Gray	5-3/4"	Shrink	12	