

Tini-Q-G® Connector Series Tini-Q-G® Cord & Panel Style Series



The Tini-QG Series is a miniature version of the standard QG Series. These "mini-XLR's" come in a wide variety of configurations. The standard TA Series cord plugs are available in 3-6 pins or contacts. The L versions, with their larger strain reliefs, are available in 3-8 pins or contacts. The TB and TY Series are panel mount connectors. The TB Series is a male connector, featuring a round panel cut-out and 3-8 pins. The TY Series is a female connector, featuring a rectangular housing and 3-5 contacts. The TA and TB Series are available with a black finish. Gold-plated contacts are available on all series. Contact the factory for details.

Specifications

Electrical

Contact Resistance: .010 ohms maximum after life (and after salt spray)
 Current Rating (Carry Only): 5A, 125 VAC (4A, 125 VAC on 5 circuit) based on 30°C maximum
 Insulation Resistance: 510,000 megohms minimum @ 500 VDC (initial); 10,000 megohms minimum (after humidity test)
 Dielectric Strength: 1,000V (rms)

Mechanical

Life: 5,000 operations minimum
 Solderability Standard: Meets EIA RS-186-9E
 Mechanical Shock: Meets Mil-Std-202, method 213B
 Vibration: Meets Mil-Std-202, method 201A
 Wire Size: #22 wire gauge solid; #24 wire gauge stranded

Environmental

Thermal Range: -55°C to +85°C
 Humidity: Meets Mil-Std-202, method 106D
 Thermal Shock: Meets Mil-Std-202, method 107D
 Salt Spray: Meets Mil-Std-202, method 101

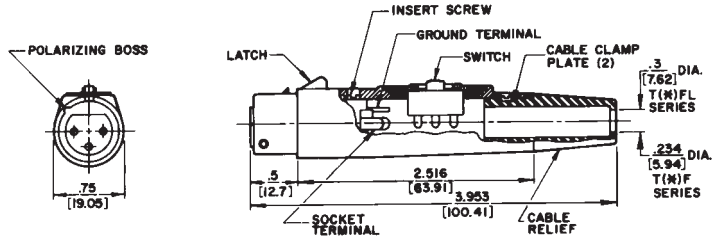
Materials

Housing: Plugs and Male Receptacles — Copper alloy, nickel-plated;
 Female Receptacles — Die-cast zinc, nickel-plated
 Black Tini-Q-G® Housing: Copper alloy, black chrome-plated
 Pin and Socket Contacts: Copper alloy, silver-plated
 Flex Relief: Molded black thermoplastic elastomer
 Latch Button: Molded black thermoplastic
 Release Lever and Mounting Washer: Steel, nickel-plated
 Standoff/Ground Terminal and Cable Clamp: Steel, electroplated
 Inserts and Insulating Spacer: Molded, high strength thermoplastic
 Latch (Female): Copper alloy, nickel-plated
 Mounting Nut: Copper alloy, nickel-plated

Ordering Information

Part Number	Style	Finish	Pins/Contacts	Notes
TA*F, TA*M	Cord	Nickel	Silver	Available in 3 - 6 pins or contacts
TA*FL, TA*ML	Cord	Nickel	Silver	Accommodates large cable, available in 3 - 8 pins or contacts
TA*FB, TA*MB	Cord	Black	Silver	Available in 3 - 6 pins or contacts
TB*M	Panel	Nickel	Silver	Male, round flange, threaded, available in 3 - 8 pins or contacts
TB*MB	Panel	Black	Silver	Male, round flange, threaded, available in 3 - 8 pins or contacts
TY*F	Panel	Nickel	Silver	Female, rectangle flange, available in 3 - 5 pins or contacts

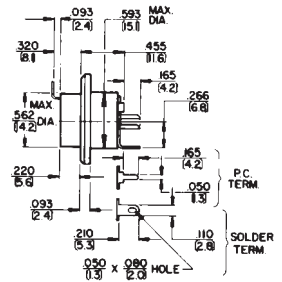
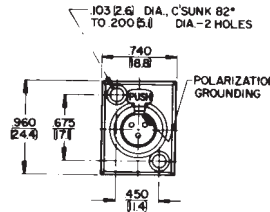
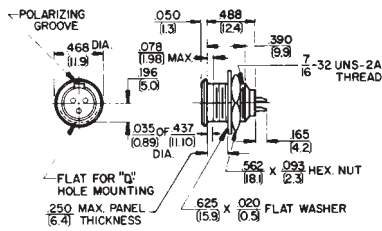
Connector Dimension Drawings Q-G® Audio - T Series



TA*F



TY*F



DIMENSIONS ARE FOR REFERENCE ONLY $\frac{\text{Inch}}{(\text{mm})}$