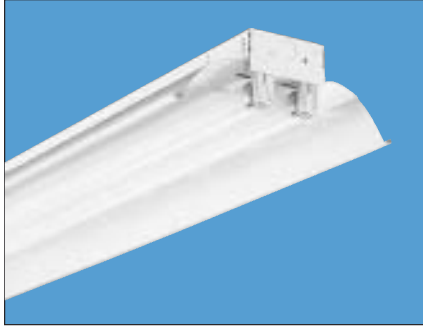


Fluorescent Industrials

L LA



Standard Industrials

Intended Use

For mounting heights up to 16' requiring low to medium light levels. Ideal for light duty areas, utility, storage rooms or retail.

Features

Solid top reflector or 8% uplight is available. Sturdy combination reflector and channel cover secured by captive quarter-turn latch for easy access to wireway. Combination endplate/channel connector supplied with each fixture. High-gloss backed white enamel finish. Reflector is painted after fabrication. Available in tandem wired lengths. Accepts plug-ins for 1, 2 or 3 primary circuits.

Ballast – Thermally-protected, resetting, Class P, HPF, non-PCB, UL listed, CSA certi-

fied ballast is standard. Sound rating depends on lamp/ballast combination.

Wiring & Electrical – AWM, TFN or THHN wire used throughout, rated for required temperatures.

Mounting – For unit or row installations, surface or suspended mounting.

Listings – 120V, 277V and MVOLT are UL Listed and CSA Certified (standard). See Options for 347V and NOM Certified.

Ordering Information

Example: **L 2 96T8 120 GEB**

| Series | Number of lamps | Lamp type | Voltage | Options/Accessories |
|--|------------------------------|--|---|---|
| L Solid reflector LA 8% uplight For tandem double-length unit, add prefix T. Example: TL | 1, 2 Not included. | 17 17W T8 (24") 20 20W T12 (24") ¹ 32 32W T8 (48") 40 40W T12 (48") 48 38W Slimline (48") 48T8HO 44W T8 (48") 96 75W Slimline (96") 96T8 59W T8 Slimline (96") 96T8HO 86W T8 380mA (96") | 120 277 347 MVOLT* Others available. * 120-277V. Must specify GEB10IS. | 1/4 One 4-lamp ballast GEB Electronic ballast, ≤20% THD GEB10IS T8 electronic ballast, ≤10% THD, instant start GEB10RS T8 electronic ballast, ≤10% THD, rapid start CSA CSA Certified (347V only) NOM NOM Certified See page 99 for others. |

NOTES:

- Specify ballast option HPF or LPF for 20W.
- For detailed mounting information consult the product specification sheets.

| Availability and Dimensions | | | | | | |
|-----------------------------|-------------------------|-------------------|---------------------|----------------------------|----------------------------|-----------------------------|
| Series | Lamps per Cross Section | Lamps per Fixture | Lamp Type | Width ² in.(cm) | Depth ² in.(cm) | Length ² in.(cm) |
| L, LA | 1 | 1 | 17, 20 ¹ | 12 (30.5) | 4 (10.2) | 24 (61.0) |
| | 2 | 2 | 17, 20 ¹ | 12 (30.5) | 4 (10.2) | 24 (61.0) |
| L, LA | 1 | 1 | 32, 40, 48 | 12 (30.5) | 4 (10.2) | 48 (121.9) |
| | 2 | 2 | 32, 40, 48, 48T8HO | 12 (30.5) | 4 (10.2) | 48 (121.9) |
| TL, TLA | 1 | 2 | 32, 40, 48, 48T8HO | 12 (30.5) | 4 (10.2) | 96 (243.8) |
| | 2 | 4 | 32, 40, 48 | 12 (30.5) | 4 (10.2) | 96 (243.8) |
| L, LA | 1 | 1 | 96, 96T8, 96T8HO | 12 (30.5) | 4 (10.2) | 96 (243.8) |
| | 2 | 2 | 96, 96T8, 96T8HO | 12 (30.5) | 4 (10.2) | 96 (243.8) |

Drawings for dimensional detail only.
May not represent actual mechanical configuration.
Dimensions are shown in inches (centimeters).

