

## FEATURES & SPECIFICATIONS

### INTENDED USE

Ideal where high brightness and good illumination levels are required such as retail, light industrial and warehouses.

### ATTRIBUTES

Aluminum construction with white enamel finish provides superior corrosion resistance.

Fixture can be assembled with snap together components and requires no tools. Available in one lamp or two lamp configuration.

### CONSTRUCTION

Heavy-duty aluminum body.

Sturdy aluminum channel cover secured by captive quarter-turn latch for easy access to wireway.

### FINISH

Painted parts finished with high-gloss, baked white enamel with polyester finish.

### ELECTRICAL SYSTEM

Thermally protected, resetting, Class P, UL Listed and CSA Certified ballast is standard. Sound rating depends on lamp/ballast combination.

AWM, TFN, THHN wire throughout, rated for required temperatures.

### INSTALLATION

For unit or row installations, surface or suspended mounting.

### LISTING

UL listed to US and Canadian safety standards. Optional: Mexico NOM.

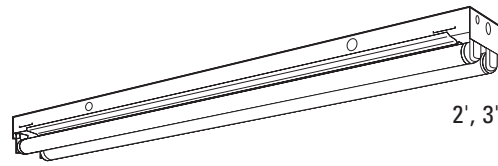
### WARRANTY

Guaranteed for one year against mechanical defects in manufacture.

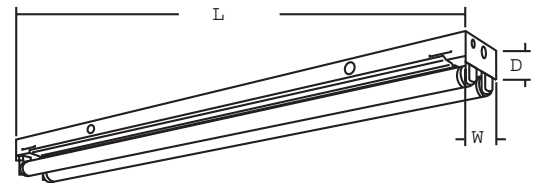
Specifications subject to change without notice.

## General-Purpose Aluminum Strip

# C-AL



2', 3', 4', 6' or 8' length  
1 or 2 lamps



### Specifications

Length: 24" (610)  
36" (914)  
48" (1219)  
72" (1829)  
96" (2438)

Width: 4-3/8" (111)

Fixture Depth: 2-1/16" (52)

All dimensions are inches (millimeters).

## ORDERING INFORMATION

For shortest lead times, configure product using **standard options (shown in bold)**.

Example: C 2 96HO 120 AL GEB

Series	Number of lamps	Lamp type	Voltage	Housing material	Options
<b>C General-purpose aluminum strip</b> <small>For tandem double-length unit, add prefix T. Example: TC</small>	1	<u>T8</u> 17 17W T8 (24") 25 25W T8 (36") <b>32 32W T8 (48")</b> 96T8 59W T8 slimline (96")	MVOLT <sup>1</sup> <b>120</b> 277 347	<b>AL Aluminum housing; white enamel finish</b>	<b>GEB10IS Electronic ballasts, &lt;10% THD, instant start<sup>2</sup></b> <b>GEB Electronic ballasts, &lt;20% THD<sup>3</sup></b> BILP IS, high efficiency, .78bf (low) <b>EL Emergency battery pack (nominal 300 lumens)</b> GLR Internal fast-blow fuse (add X for external) <sup>4</sup> GMF Internal slow-blow fuse (add X for external) <sup>4</sup> PLF_ Plug-in wiring. Specify 1, 2 or 3 branch circuits and hot wires (A = Black, B = Red, C = Blue, AB or AC) TILW Tandem in-line wiring <b>CW20 Cold-weather ballasts, -20°F starting temp<sup>5</sup></b> CSA CSA Certified (Only required for 347V) NOM NOM Certified
	2 Not included.		Others available.		
		<u>T12 Slimline</u> 36 30W slimline (36") 48 38W slimline (48") 72 55W slimline (72") <b>96 75W slimline (96")</b>			
		<u>HO</u> 48HO 60W 800mA (48") 72HO 85W 800mA (72") <b>96HO 110W 800mA (96")</b> 96T8HO 86W 380mA (96")			

### Accessories

Order as separate catalog numbers.

WGCUN	Wireguard, 4' white. <sup>6</sup>
WGCSMR	Wireguard, 4' white for symmetric reflector. <sup>6</sup>
WGCASR	Wireguard, 4' white for asymmetric reflector. <sup>6</sup>
CSMR 48SAR	Symmetric reflector, 4' aluminum, 7" aperture. <sup>6</sup>
CASR 48SAR	Asymmetric reflector, 4' aluminum, 5-3/4" wide. <sup>6</sup>

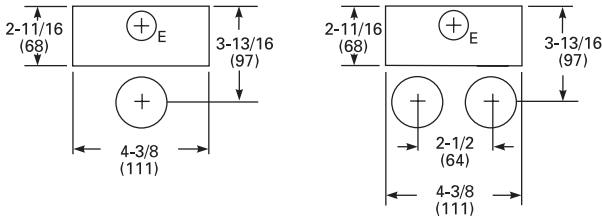
### NOTES:

- MVOLT standard for 120-277V applications, 50-60 mhz operation. Some options require voltage specified.
- T8 lamps only.
- Slimline and T12HO lamps only.
- Specify voltage.
- T12HO lamps only.
- Order two for 8' fixtures.

## C-AL General-Purpose Aluminum Strip

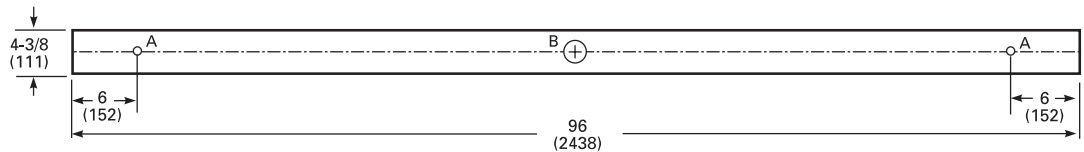
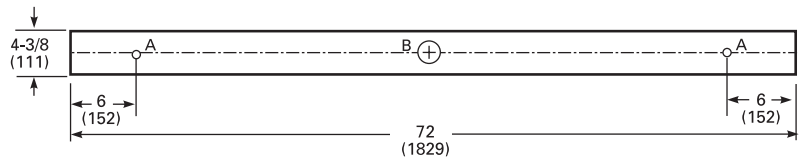
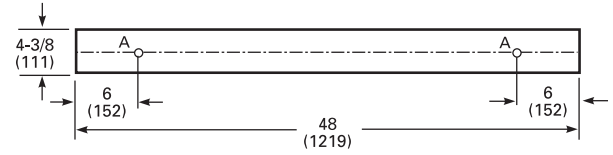
### MOUNTING DATA

For unit or row installation, surface or suspended mounting.  
 Unit installation — Minimum of two hangers required.  
 Row installation — Two hangers per channel required.  
 See ACCESSORIES below for hanging devices.



### DIMENSIONS

Inches (millimeters). Subject to change without notice.



A = 7/8 (22) Dia.K.O.  
 B = 2 (51) Dia.K.O.

### PHOTOMETRICS

Full photometric data available upon request.

#### C 2 96

TEST NO: LTL 18310  
 LUMENS PER LAMP: 6300

ROR	pf	Coefficients of Utilization								
		80%			70%			50%		
		50%	30%	10%	50%	30%	10%	50%	30%	10%
0	103	103	103	98	98	98	90	90	90	
1	86	82	78	82	78	74	75	72	69	
2	74	67	61	70	64	59	64	59	55	
3	64	56	49	61	54	48	56	49	44	
4	56	47	41	53	46	40	49	42	37	
5	49	41	35	47	39	34	43	37	31	
6	44	36	30	42	34	29	39	32	27	
7	40	32	26	38	30	25	35	28	24	
8	36	28	23	35	27	22	32	25	21	
9	33	25	20	32	25	20	29	23	19	
10	30	23	18	29	22	18	27	21	17	

#### Zonal Lumen Summary

Zone	Lumens	% Lamp	% Fixture
0° - 30°	1785.8	14.2	15.7
0° - 40°	3042.4	24.1	26.8
0° - 60°	5944.0	47.2	52.3
0° - 90°	9027.5	71.6	79.4
90° - 180°	2341.8	18.6	20.6
0° - 180°	11369.4	90.2	100.0

#### C 2 32

TEST NO: LTL 5181  
 LUMENS PER LAMP: 2900

ROR	pf	Coefficients of Utilization								
		80%			70%			50%		
		50%	30%	10%	50%	30%	10%	50%	30%	10%
0	106	106	106	102	102	102	93	93	93	
1	89	84	79	85	80	76	78	74	71	
2	76	68	62	72	66	60	66	61	56	
3	65	57	50	62	55	49	57	51	45	
4	57	48	42	55	47	40	50	43	38	
5	51	42	35	48	40	34	44	37	32	
6	45	36	30	43	35	29	40	33	28	
7	41	32	26	39	31	25	36	29	24	
8	37	29	23	35	28	22	33	26	21	
9	34	26	20	32	25	20	30	23	19	
10	31	23	18	30	23	18	28	21	17	

#### Zonal Lumen Summary

Zone	Lumens	% Lamp	% Fixture
0° - 30°	842.1	14.5	15.6
0° - 40°	1435.8	24.8	26.7
0° - 60°	2810.1	48.4	52.2
0° - 90°	4362.5	75.2	81.0
90° - 180°	1021.0	17.6	19.0
0° - 180°	5383.6	92.8	100.0

### Energy (Calculated in accordance with NEMA standard LE-5)

ORDERING INFORMATION	LER.FL	ANNUAL ENERGY COST*	LAMP DESCRIPTION	LAMP LUMENS	BALLAST FACTOR	WATTS
C 2 32 MVOLT GEB10IS	77.6	\$3.09	F32T8/735	2800	.88	59
C 2 32 MVOLT BILP	93.6	\$2.56	F32T8/835/HT8	3100	.78	48

\* Comparative yearly lighting energy cost per 1000 lumens